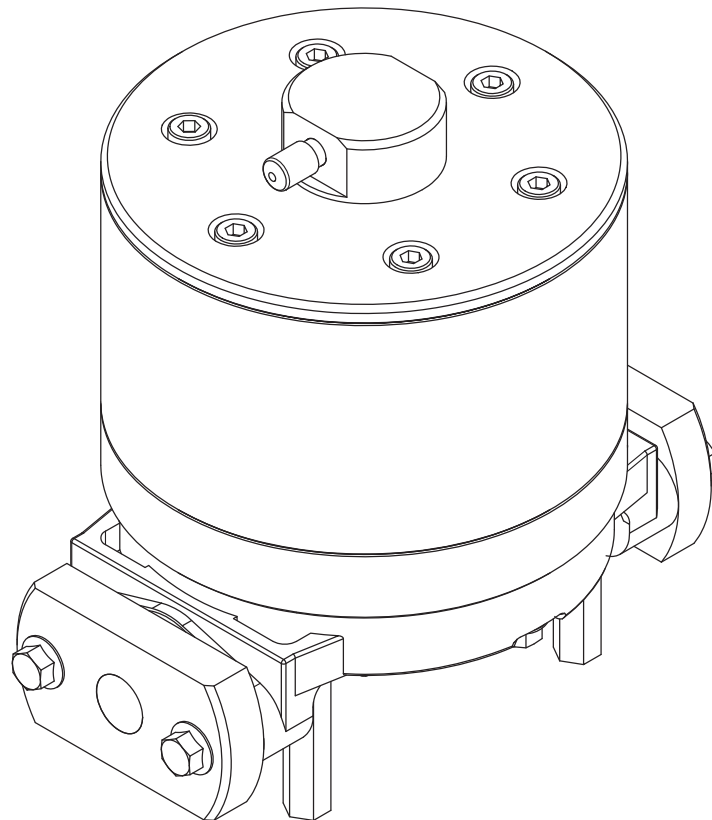




**DAMPER SERVICE BOOK**



Type 10□ 15□ 25□ 40□ 50□

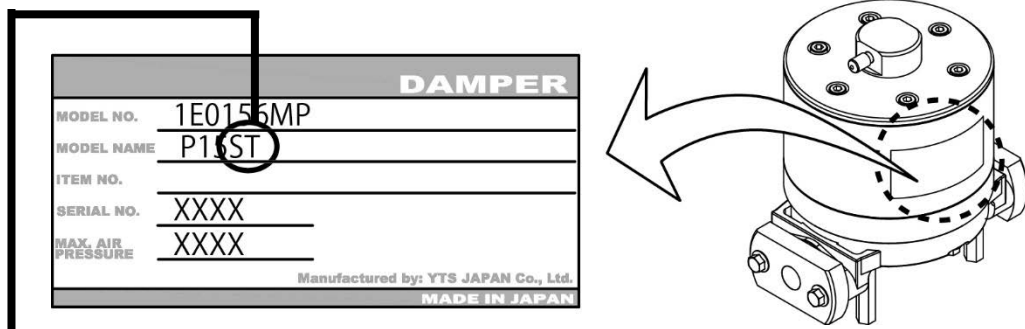
Series Dampers

# HOW TO USE THE DAMPER SERVICE BOOK

## Type 15□

- The servicing method for each damper can be different depending on the model and size. Please refer to the "Model Name" noted on the Damper Identification Label and use the below table as a page number and diagram reference guide.









ⓄDamper Identification (ID) Label Ⓞ



	· DIAPHRAGM · CENTRE ROD	· CENTRE DISK · DIAPHRAGM · Mounting Direction	· BEARING CENTRE ROD · PILOT VALVE	· Exploded View ※ 1 · Assembly torque values / Re-torque values
Damper Model Code	Page Number & Diagram Reference Numbers			
AC SC AN SN AH SH AS SS	1-①	2-⑥	3	4-③
AT ST	1-①	2-⑦	3	4-③
AW SW	1-③	2-⑩	3	4-③
PC PH PN PS VS	1-②	2-⑧	3	4-④
PT VT	1-②	2-⑨	3	4-④
PW VW	1-④	2-⑩	3	4-④

※ 1 )Before operating the damper for the first time please re-torque all bolts. Also re-torque bolts if leaks are discovered as part of the daily inspection regime.

### Description of Diagrams used within the Damper Service Book

 Check Condition & Measurements Carefully	 Use Oil to help with Assembly	 Use Grease to help with Assembly	 Apply <b>LOCTITE</b> ® to adhere
 If within tolerance then continue to Use	 If beyond allowable tolerance then dispose	 Replace with New Parts	 Hand-tight

## ⚠ WARNING



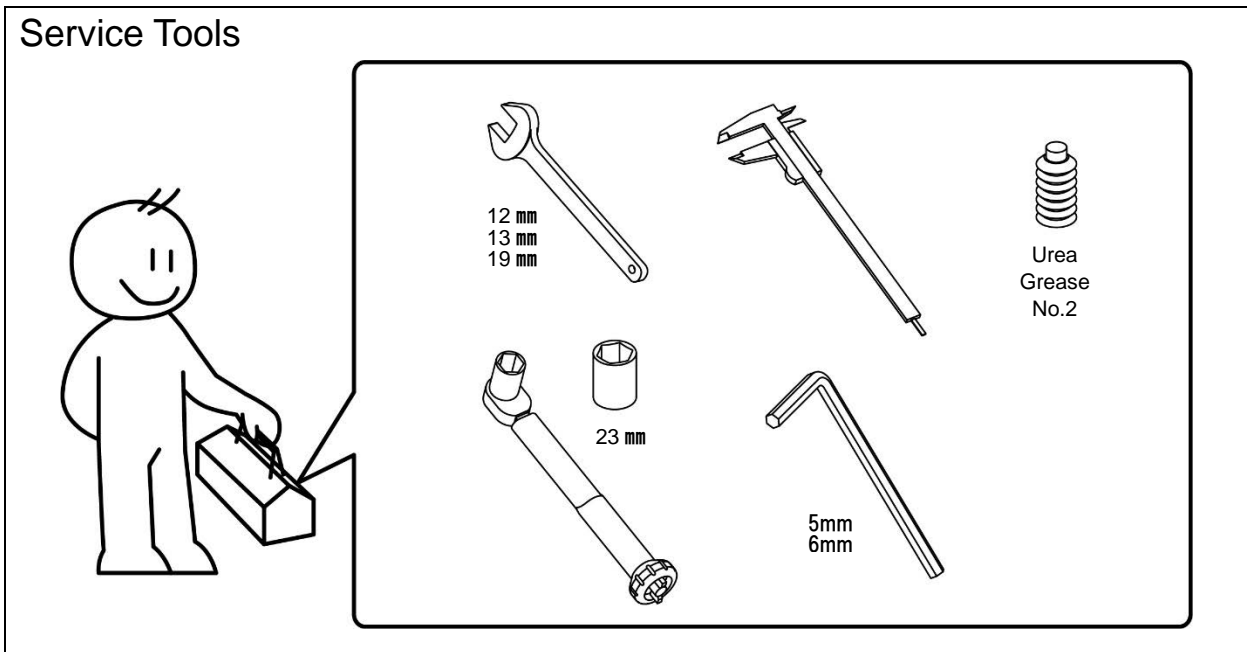
For your own safety and the safety of the people around you, be sure to read the procedures noted within carefully before performing maintenance on this product. After reading this document, be sure to keep it handy for future reference.

## ⚠ WARNING



Before commencing any maintenance work, Disconnect the compressed air supply and remove and clean any remaining liquids contained on around or within the damper. If liquids are not removed or neutralized then there is a possibility of a serious injury such as burns, blindness, poisoning or even death if chemicals adhere to the skin eyes or are accidentally inhaled or swallowed. If residual air pressure is present within the damper there could be a danger of sudden decompression or explosion resulting in severe injury or even death. In case of disassembling, be sure to wear protective equipment, such as face mask, gloves, etc. When replacing spare parts, be sure to use genuine YTS parts. The installation and use of non-specified parts may cause a malfunction or damage to the product.

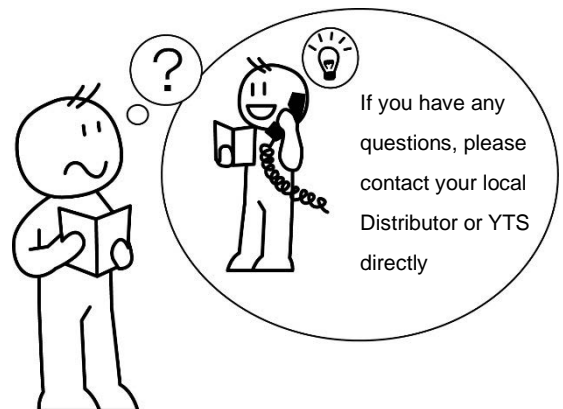
### Service Tools



### Recommended Changeover Time for the Replacement of Diaphragms ※

CR, NBR, EPDM	10 million cycles
PTFE	10 million cycles
TPEE, TPO	15 million cycles
PTFE · EPDM	60 million cycles

- ※ Conditions; with fresh water at room temperature and 0 head  
Conditions such as over pressurization, dry running high or low temperatures, Chemical attack or Abrasion etc. can drastically shorten diaphragm life.
- ※ O-rings and packing should be replaced during service.
- ※ When reassembling the damper please follow the disassembly Procedure in reverse. For all torque values refer to the Exploded view on page 4.
- ※ When ordering spare parts, please refer to the damper "SERIAL NO.". As stated on the Identification label.



# Retightening

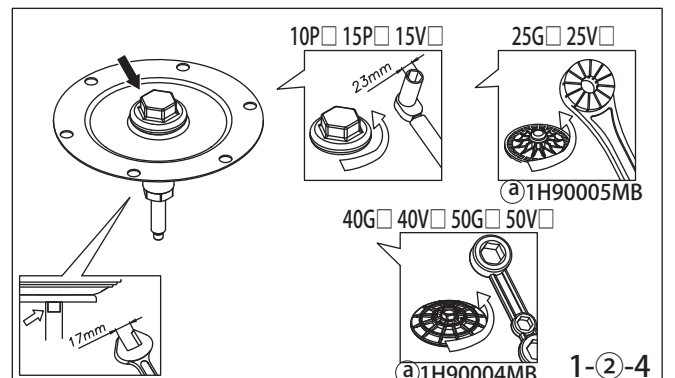
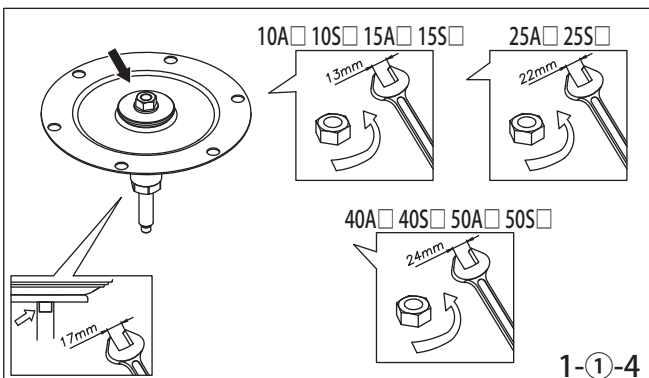
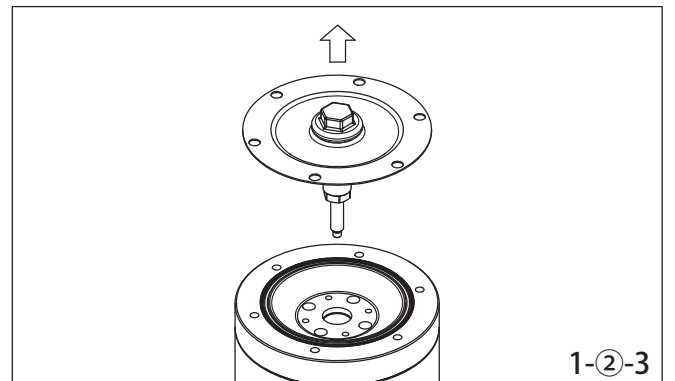
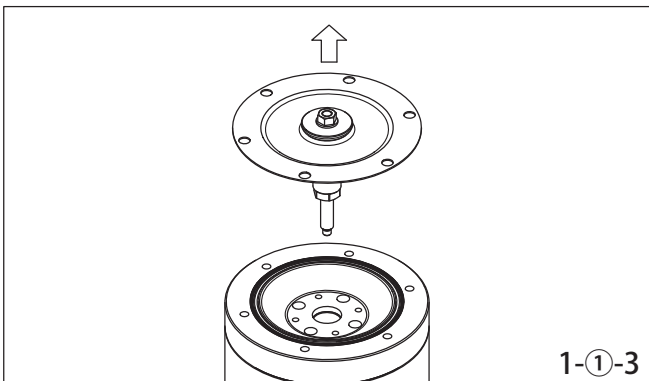
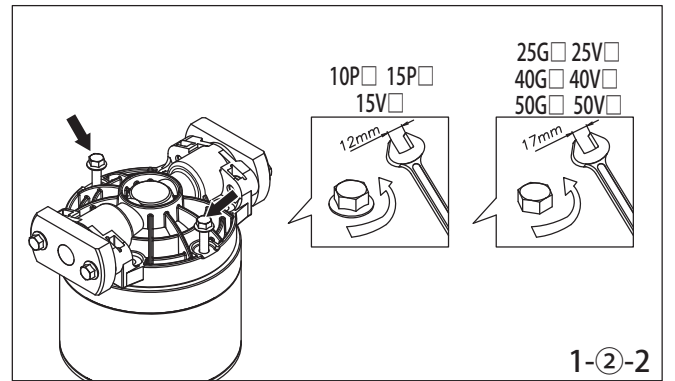
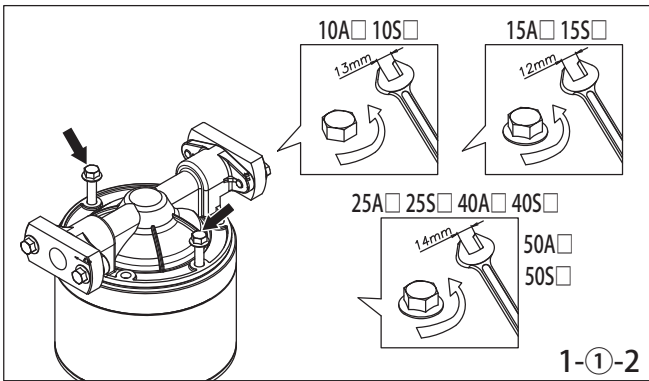
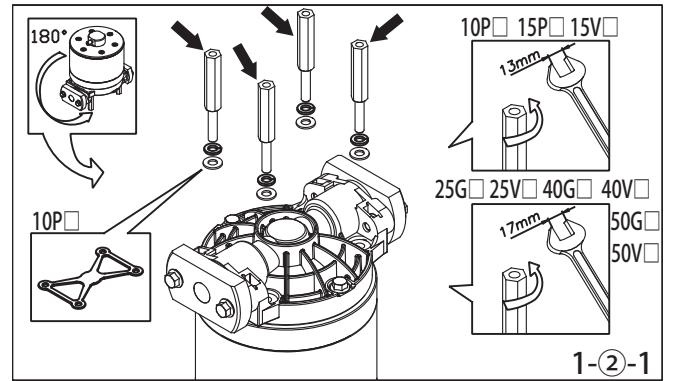
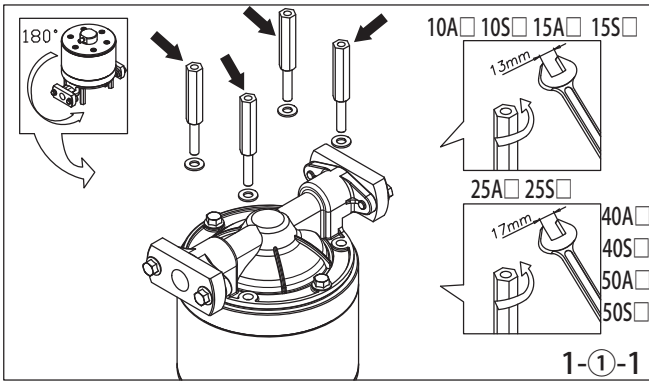
1. Before starting operation.
2. At quarterly inspections after installation. (Biannual if the room temperature, such as in a clean room, is maintained within plus or minus 5°C of the ambient temperature.)
3. When restarting the pump with low temperature after it stops running because ambient temperature or liquid temperature becomes too high, and low while it stops.
4. If you find fluid leakage on daily inspection.



# 1

- 10A□ 10S□ 15A□ 15S□
- 25A□ 25S□
- 1-① 40A□ 40S□
- 50A□ 50S□

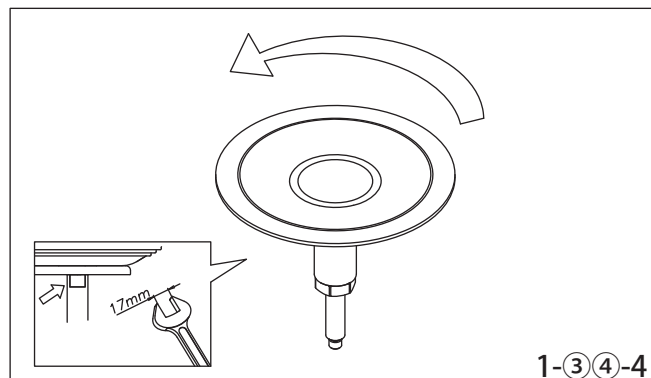
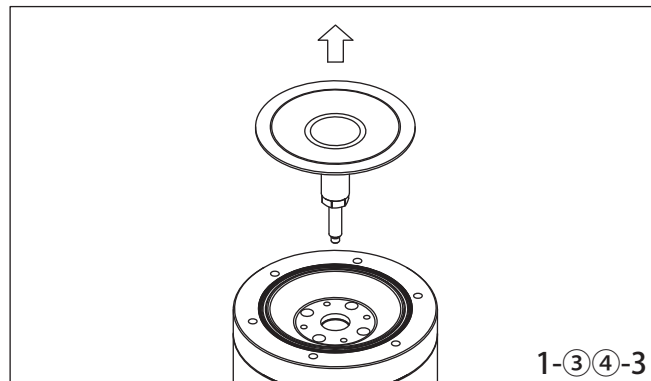
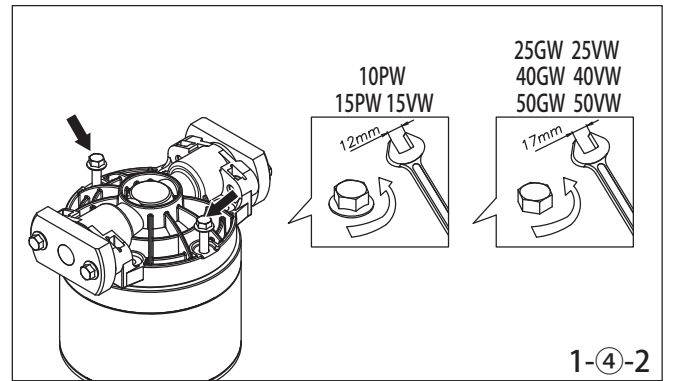
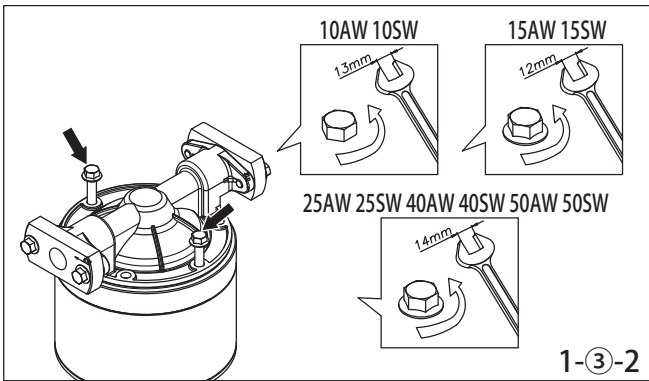
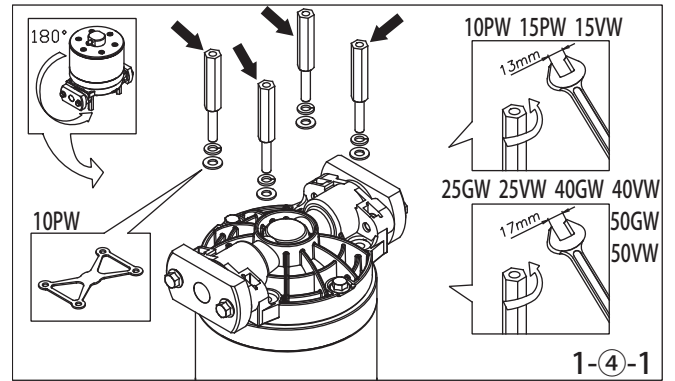
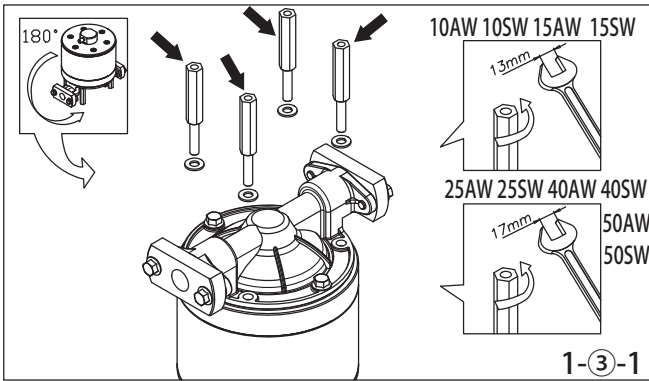
- 10P□ 15P□ 15V□
- 25G□ 25V□
- 1-② 40G□ 40V□
- 50G□ 50V□



# 1

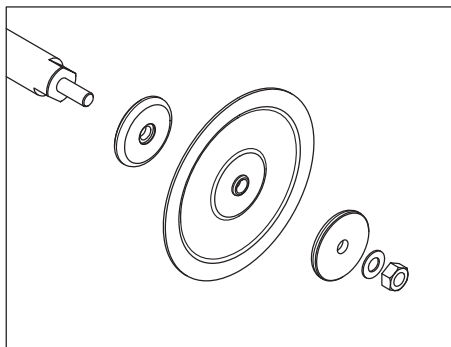
10AW 10SW 15AW 15SW  
25AW 25SW  
1-③ 40AW 40SW  
50AW 50SW

10PW 15PW 15VW  
25GW 25VW  
1-④ 40GW 40VW  
50GW 50VW

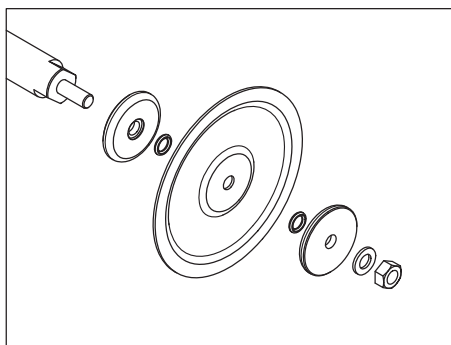


# 2

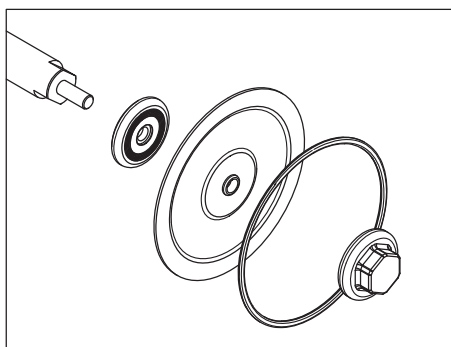
2-① 10AH 10SH  
10AS 10SS



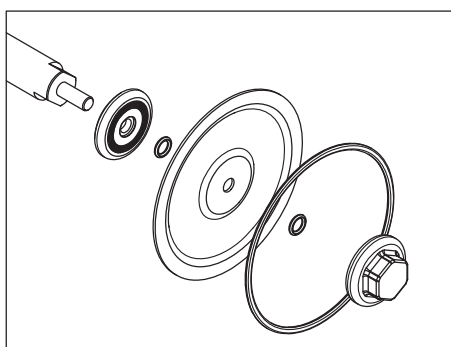
2-② 10AC 10SC  
10AN 10SN  
10AT 10ST



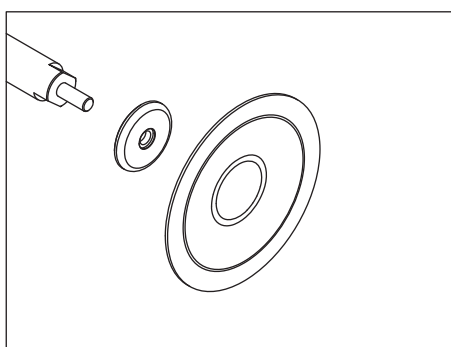
2-③ 10PH  
10PS



2-④ 10PC  
10PN  
10PT



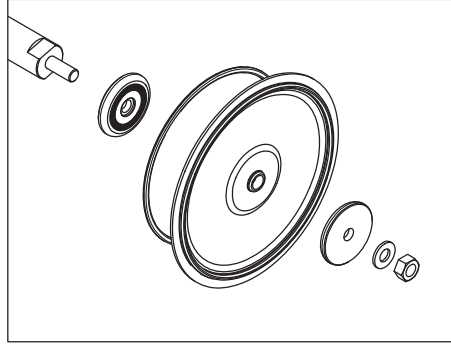
2-⑤ 10AW 10SW  
10PW



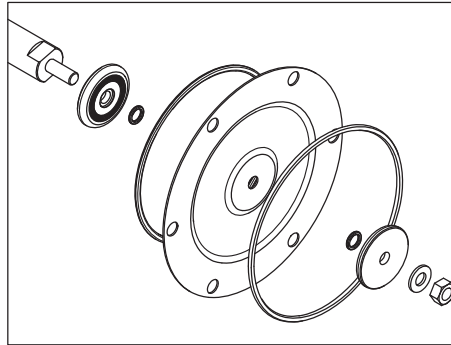


# 2

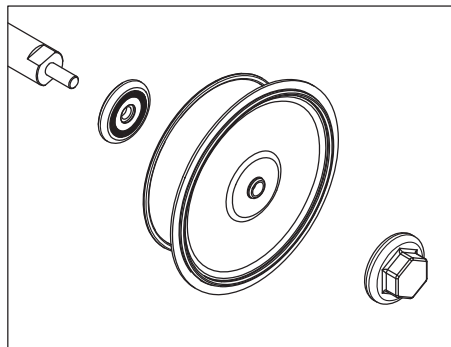
2-⑥ 15AC 15SC  
15AN 15AN  
15AH 15SH  
15AS 15SS



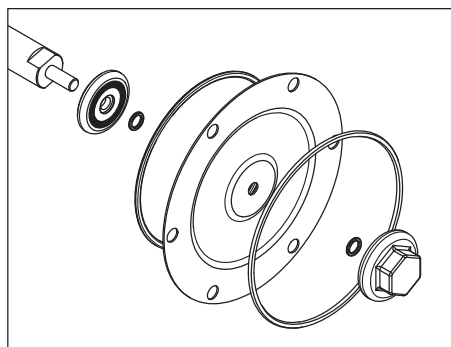
2-⑦ 15AT 15ST



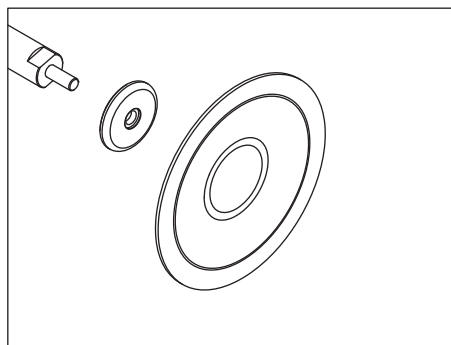
2-⑧ 15PC 15VS  
15PN  
15PH  
15PS



2-⑨ 15PT 15VT

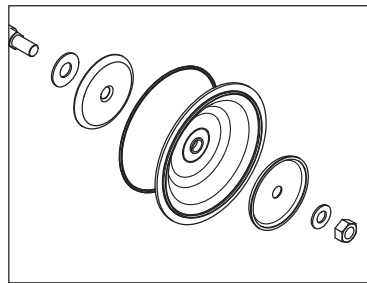


2-⑩ 15AW 15SW  
15PW 15VW

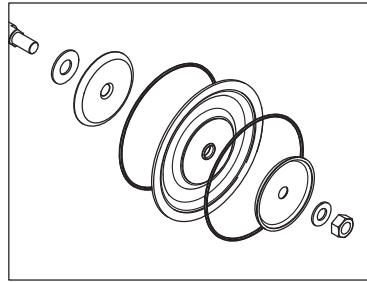


# 2

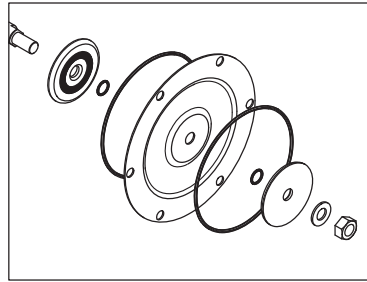
2-⑪ 25AC 25SC  
25AN 25SN  
25AE 25SE  
25AV 25SV



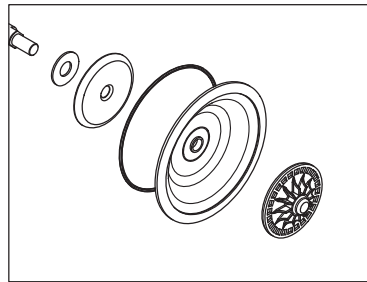
2-⑫ 25AH 25SH  
25AS 25SS



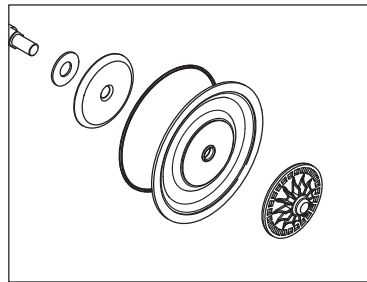
2-⑬ 25AT 25ST



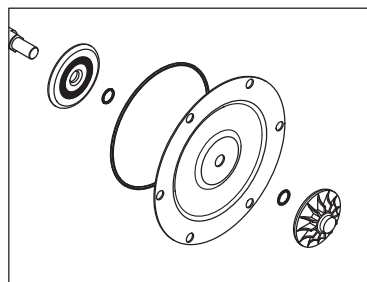
2-⑭ 25GC  
25GN  
25GE  
25GV



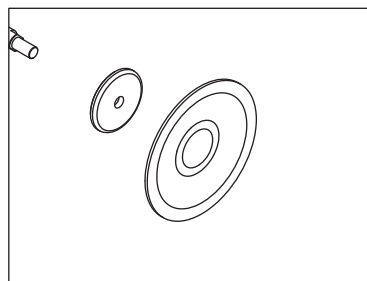
2-⑮ 25GH 25VS  
25GS



2-⑯ 25GT 25VT

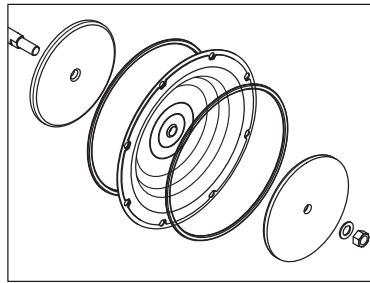


2-⑰ 25AW 25SW  
25GW 25VW

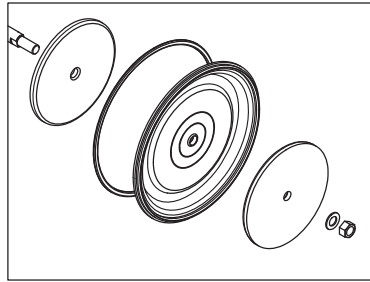


# 2

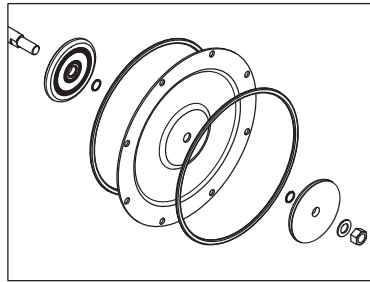
2-18 40AC 40SC  
40AN 40SN  
40AE 40SE  
40AV 40SV



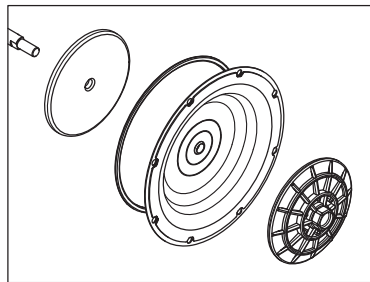
2-19 40AH 40SH  
40AS 40SS



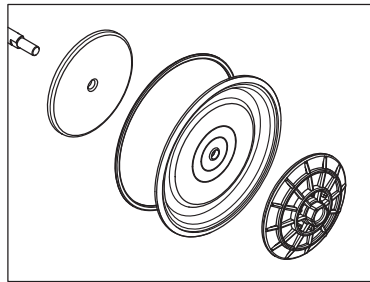
2-20 40AT 40ST



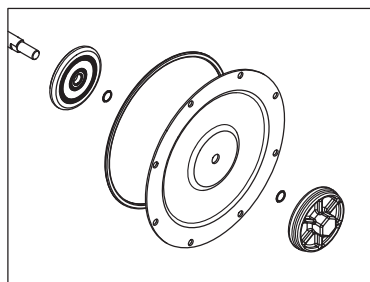
2-21 40GC  
40GN  
40GE  
40GV



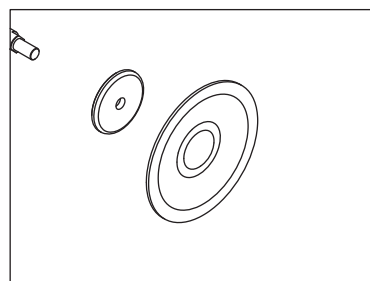
2-22 40GH 40VS  
40GS



2-23 40GT 40VT

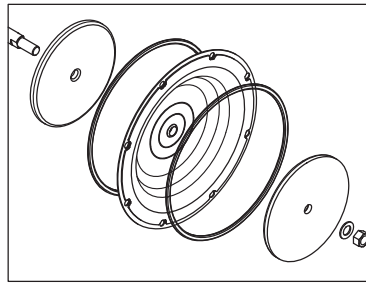


2-24 40AW 40SW  
40GW 40VW

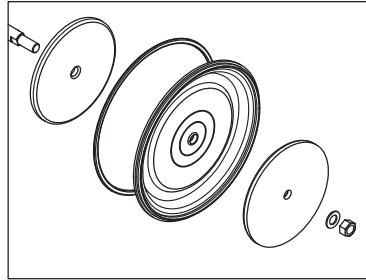


# 2

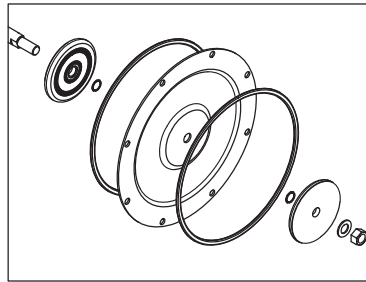
2-(25) 50AC 50SC  
50AN 50SN  
50AE 50SE  
50AV 50SV



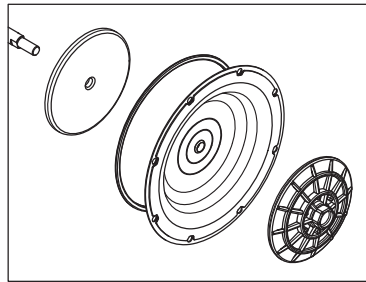
2-(26) 50AH 50SH  
50AS 50SS



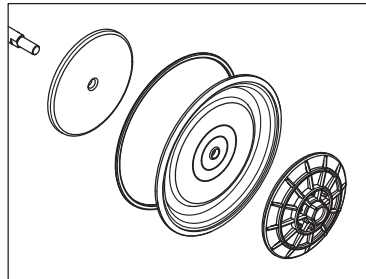
2-(27) 50AT 50ST



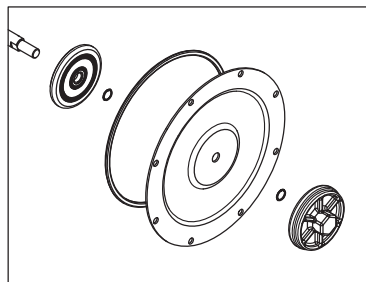
2-(28) 50GC  
50GN  
50GE  
50GV



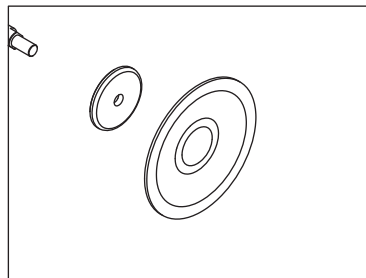
2-(29) 50GH 50VS  
50GS



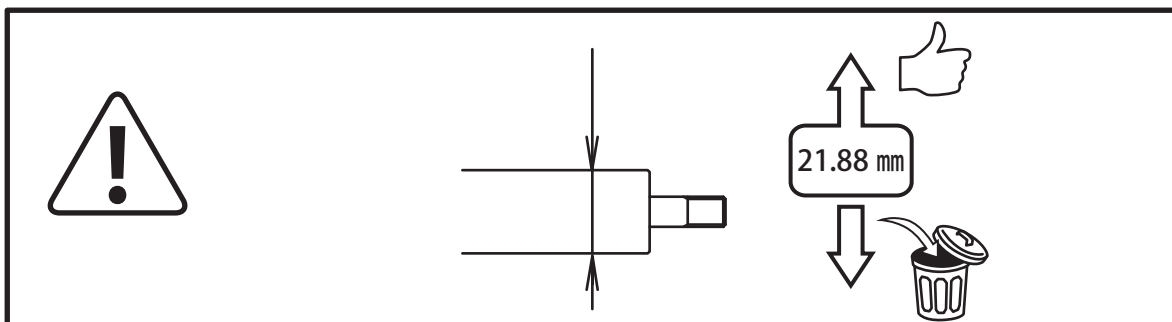
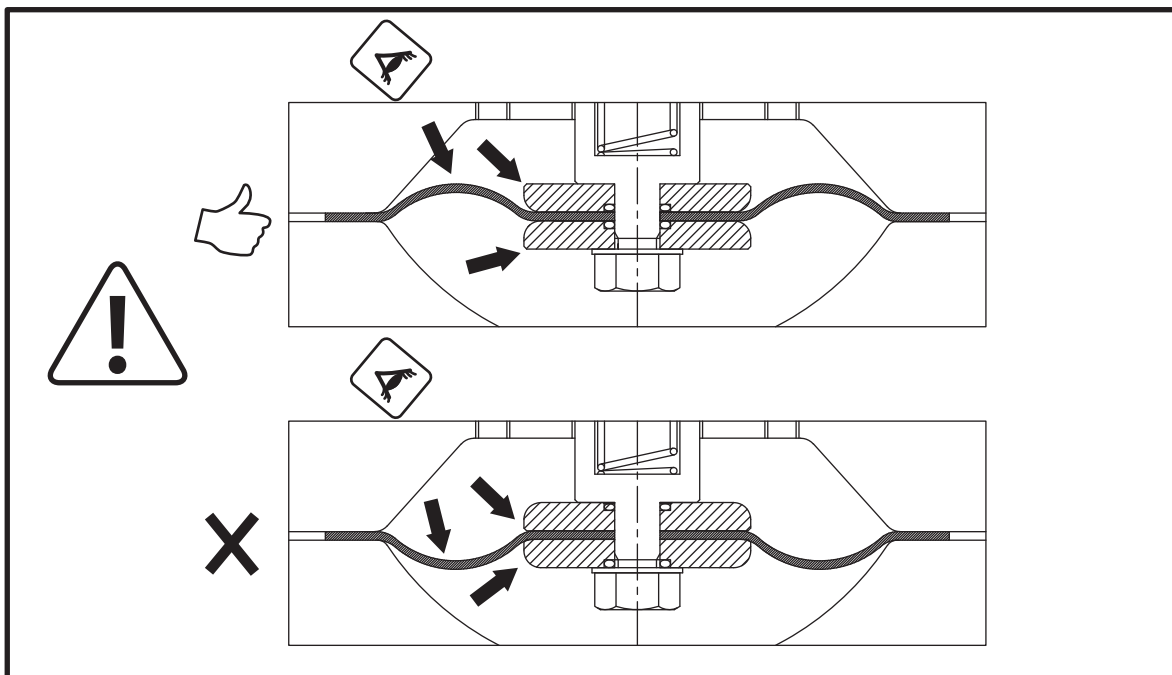
2-(30) 50GT 50VT



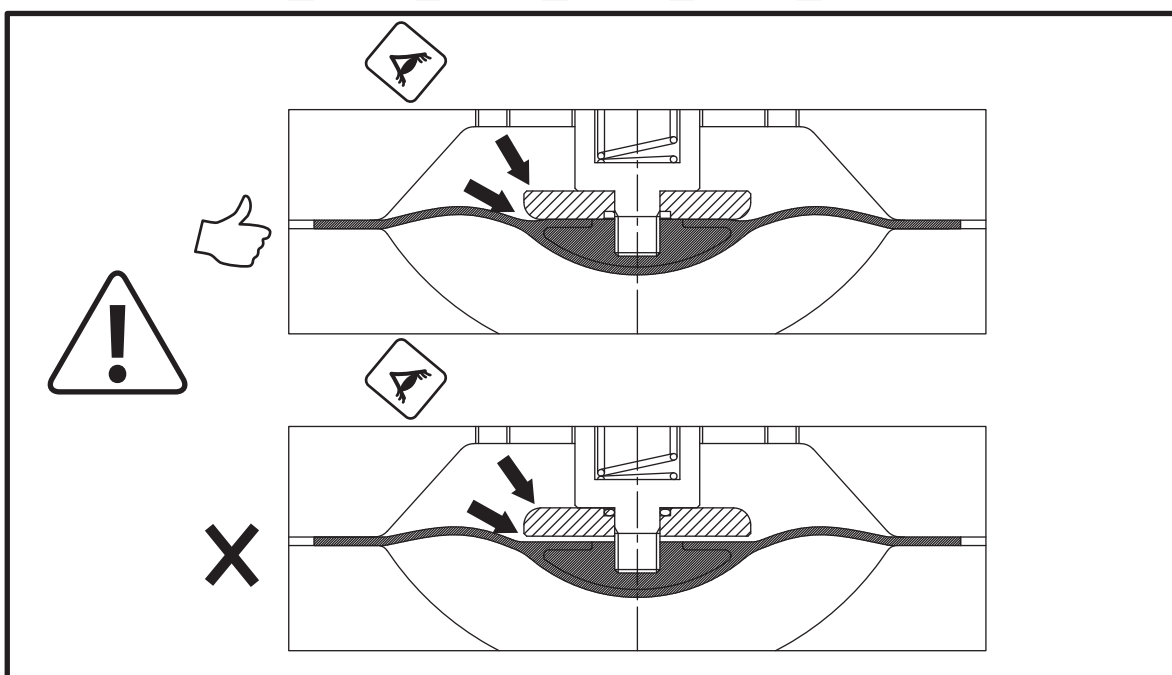
2-(31) 50AW 50SW  
50GW 50VW



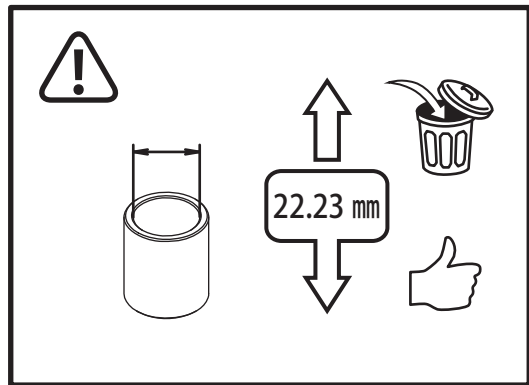
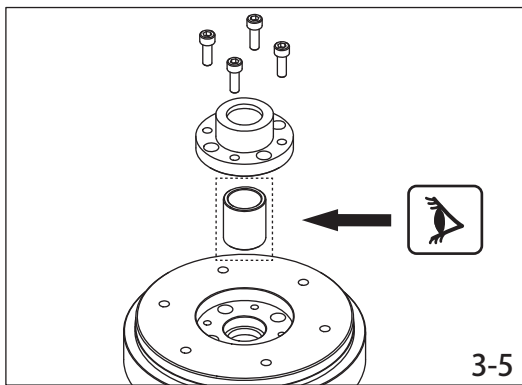
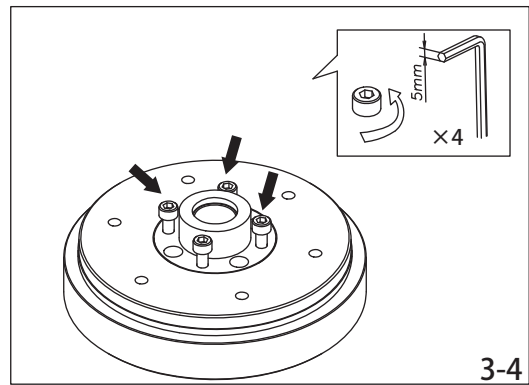
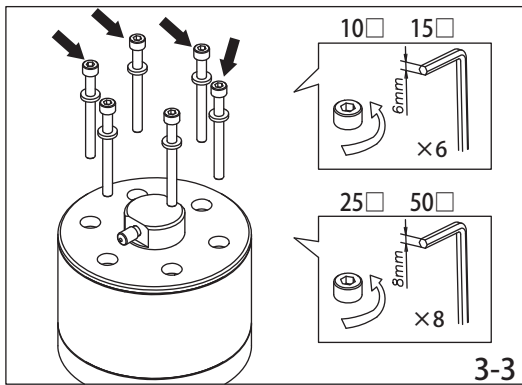
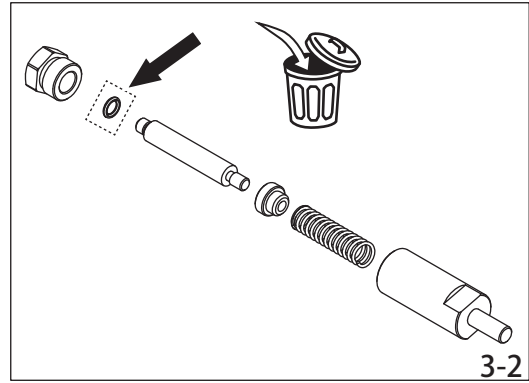
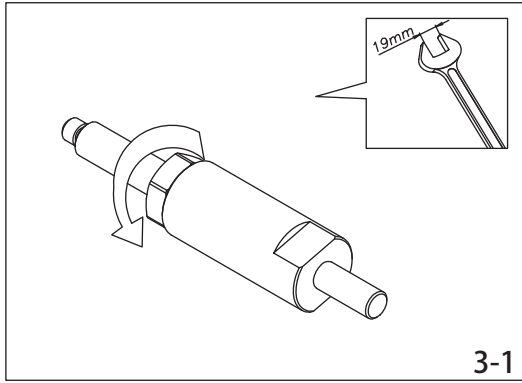
# 2



2-⑤ 2-⑩ 2-⑰ 2-⑳ 2-㉑

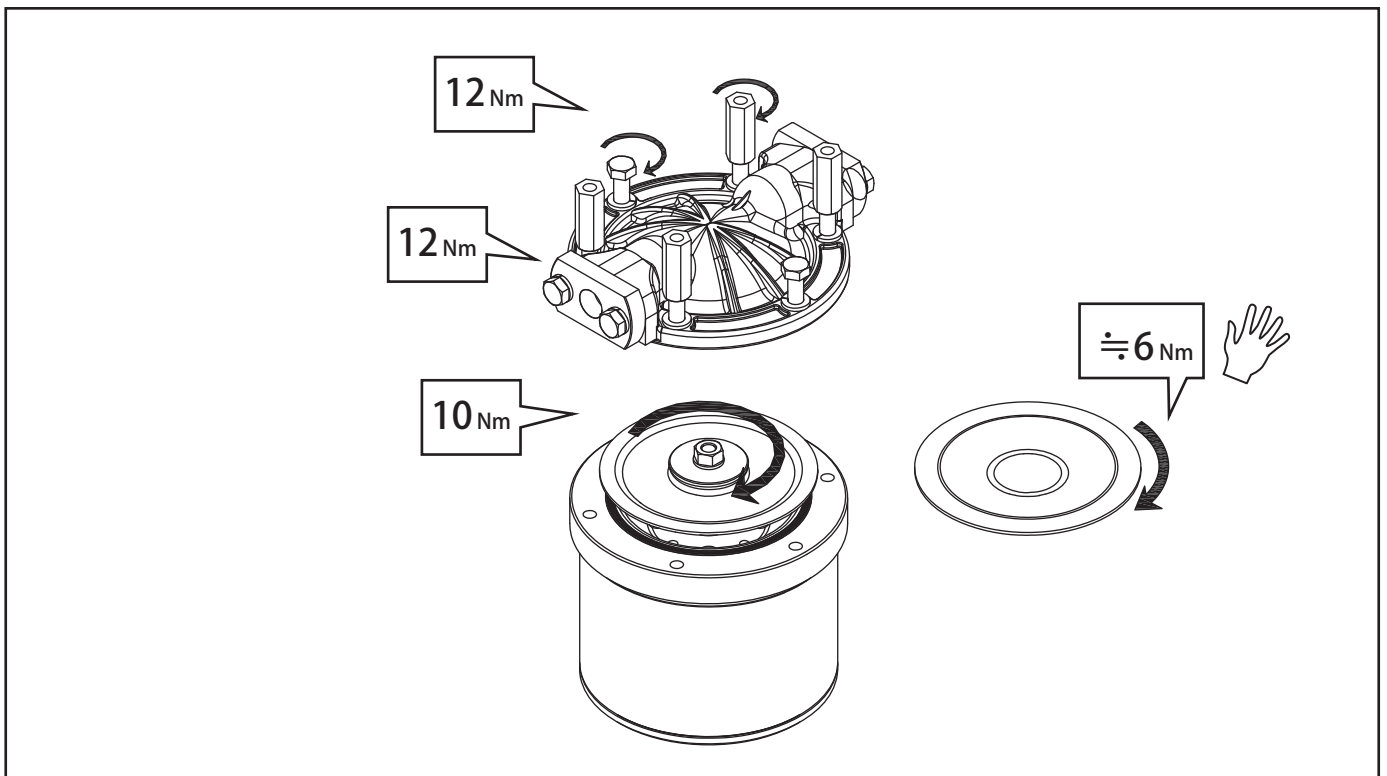
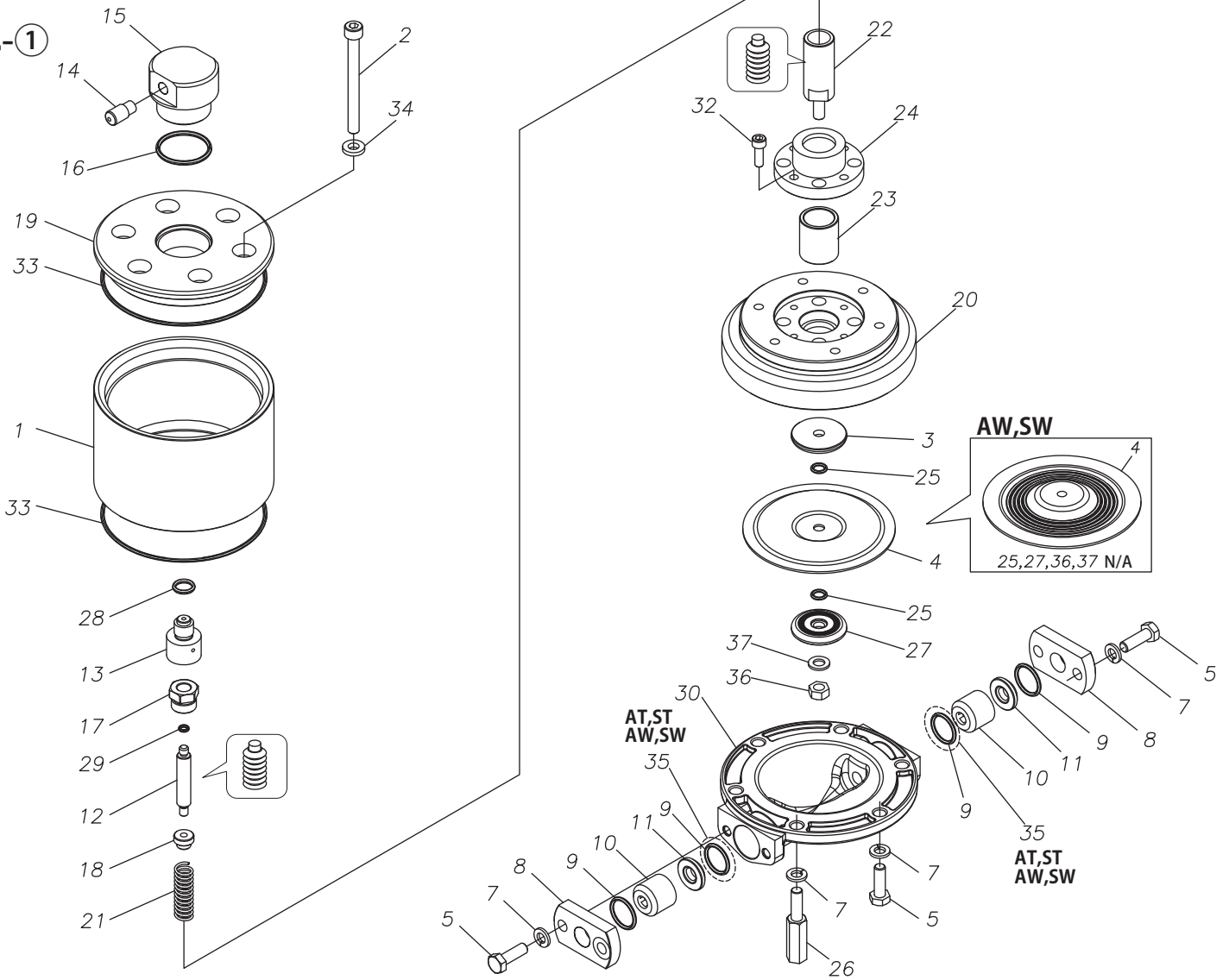


# 3



# 4 10A □ 10S □

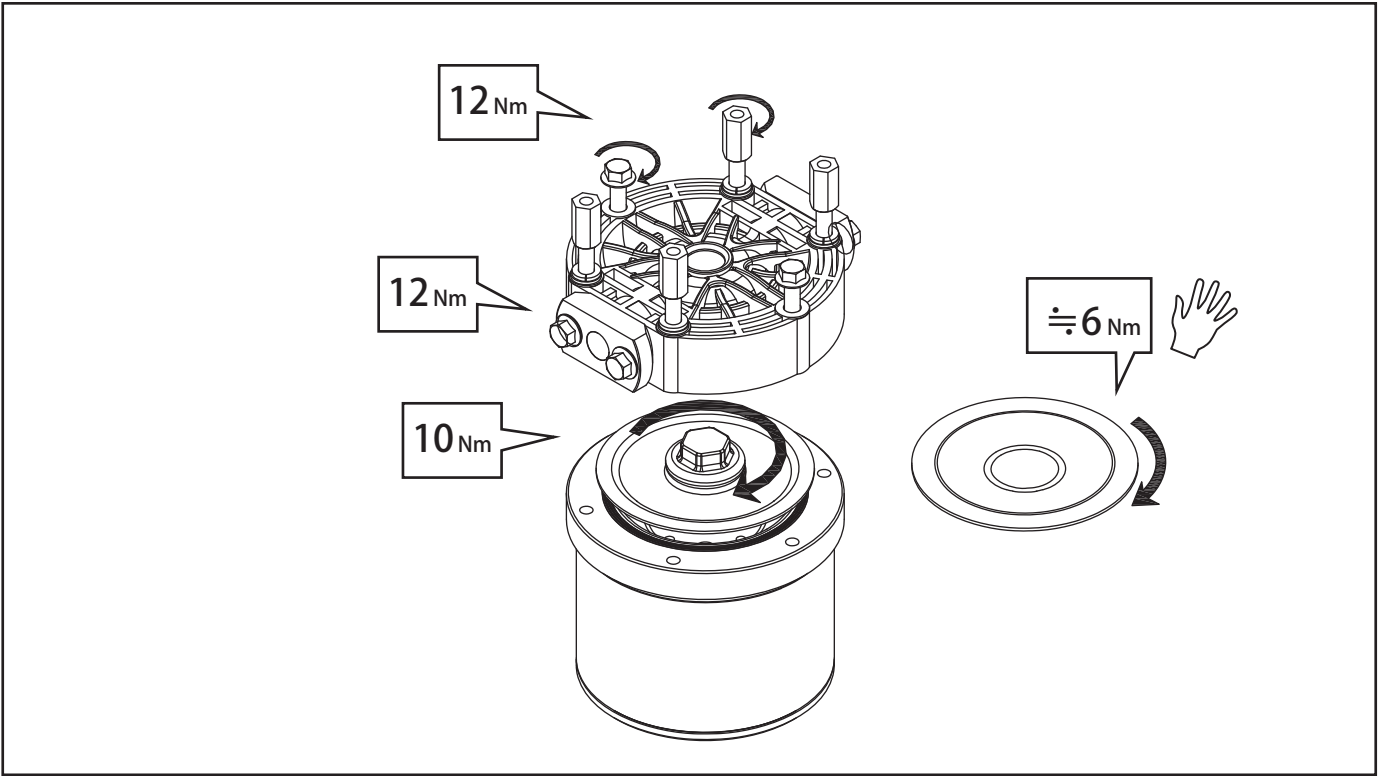
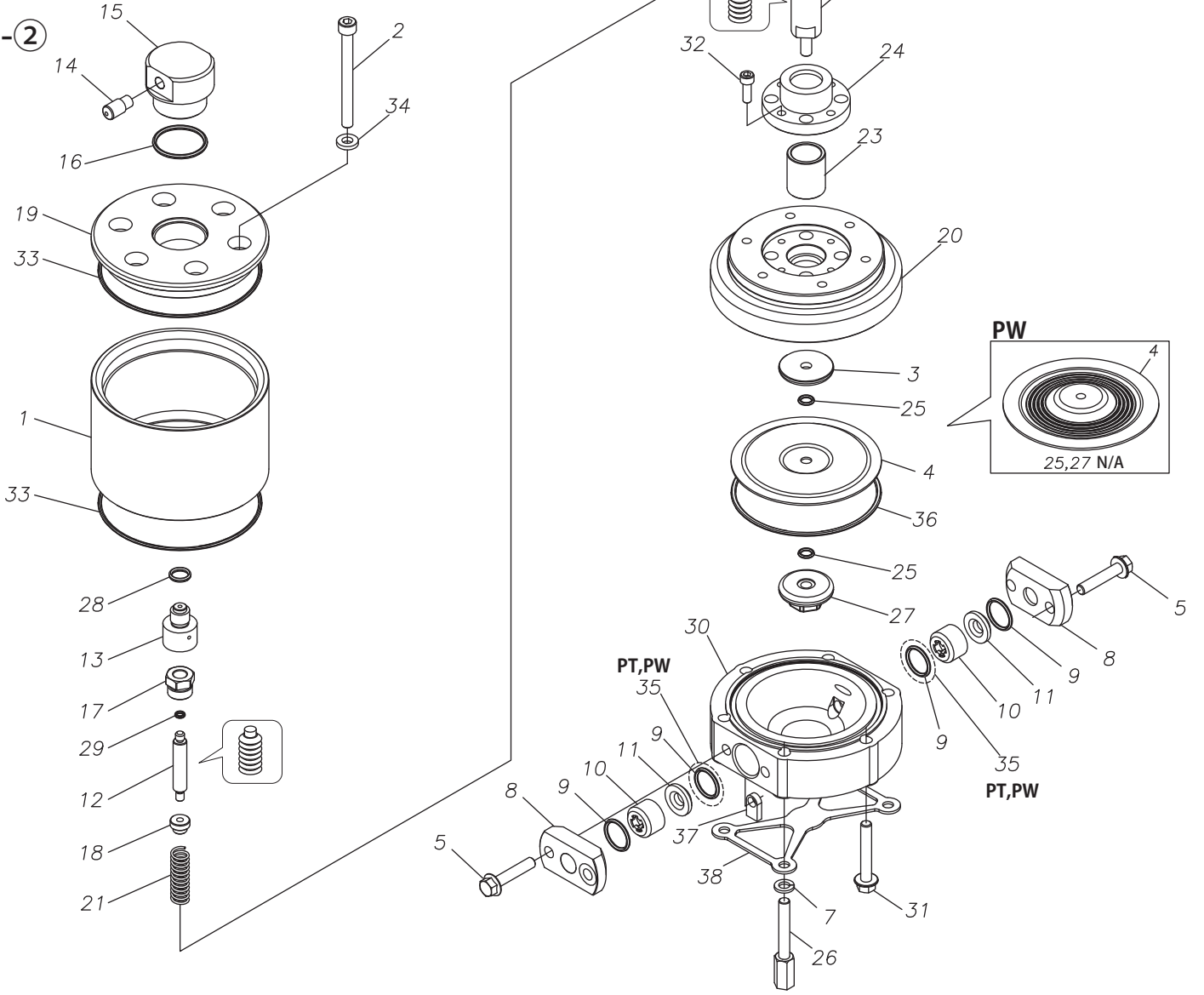
4-①



# 4

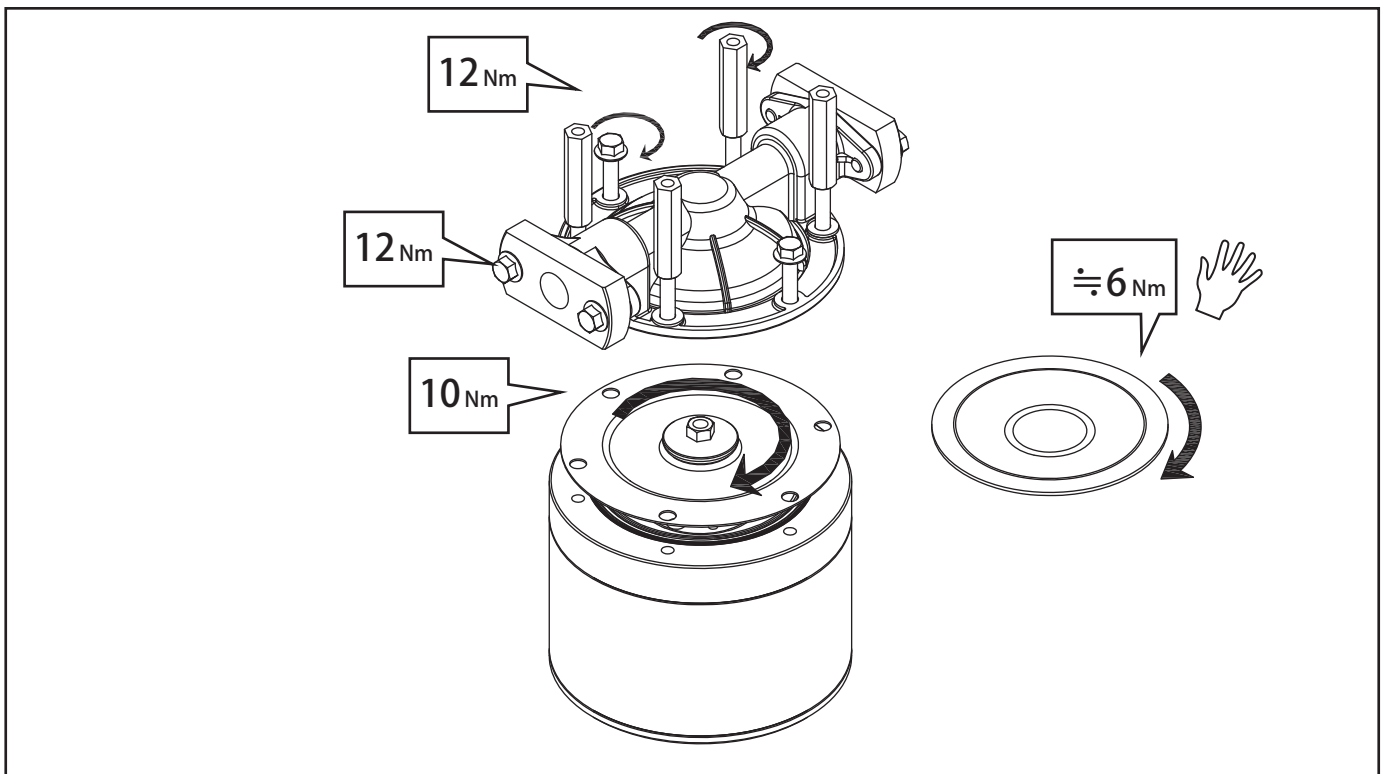
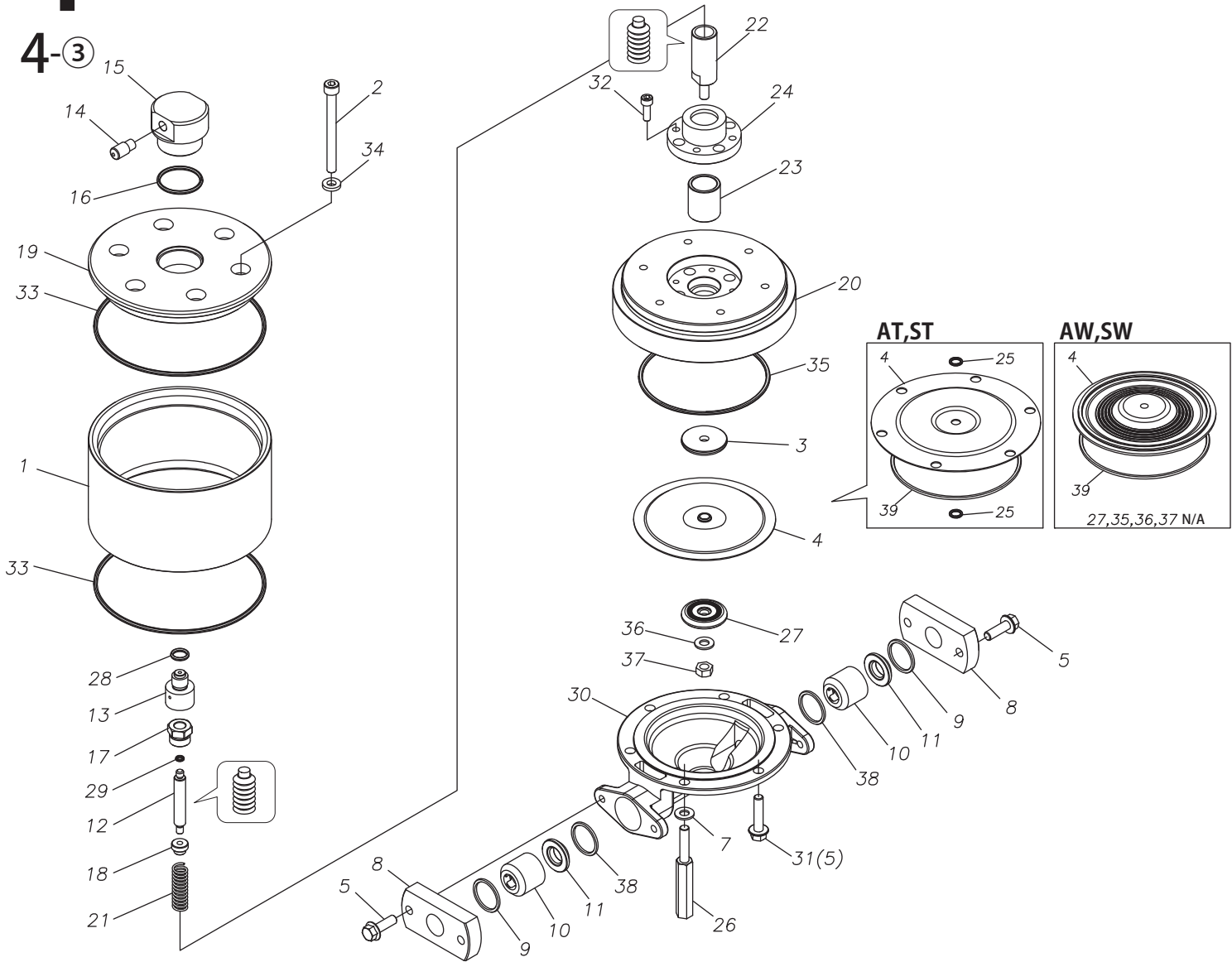
10P□

4-②



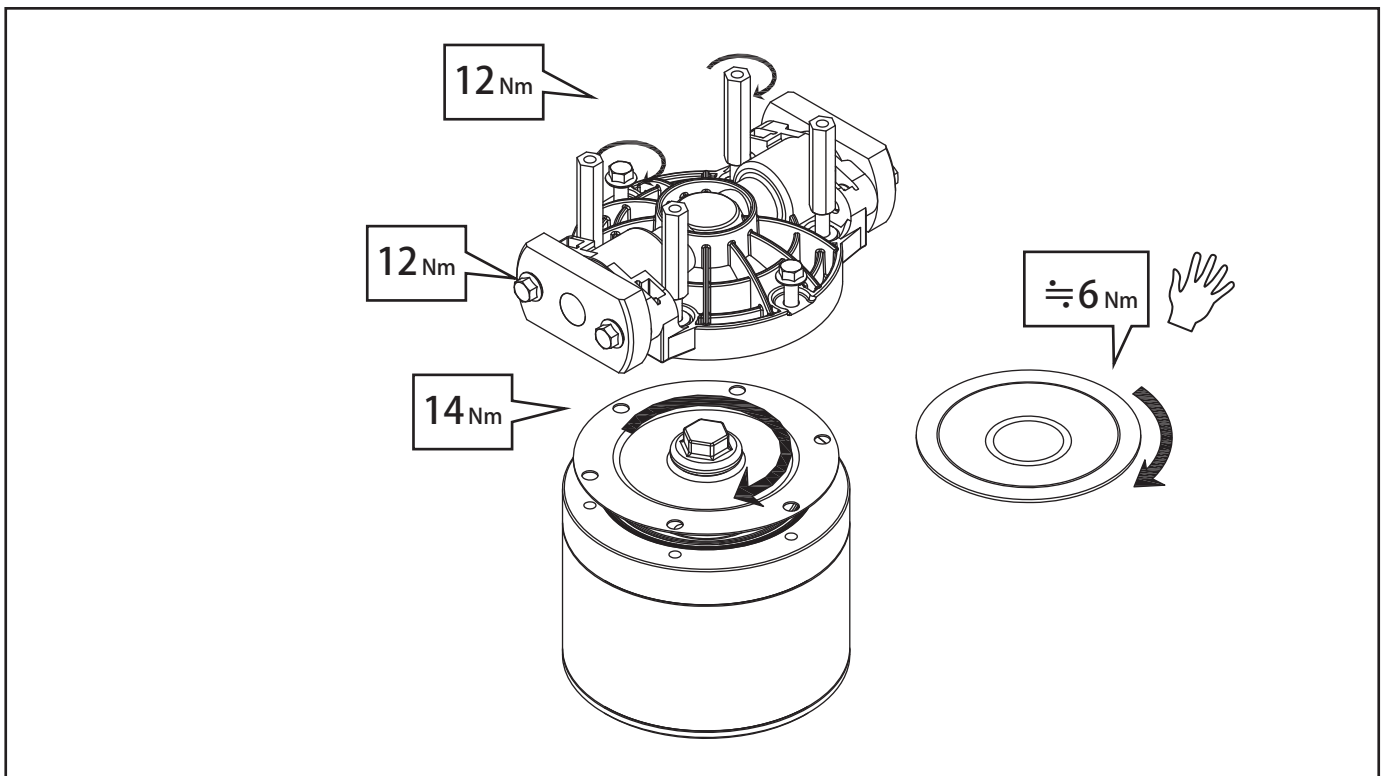
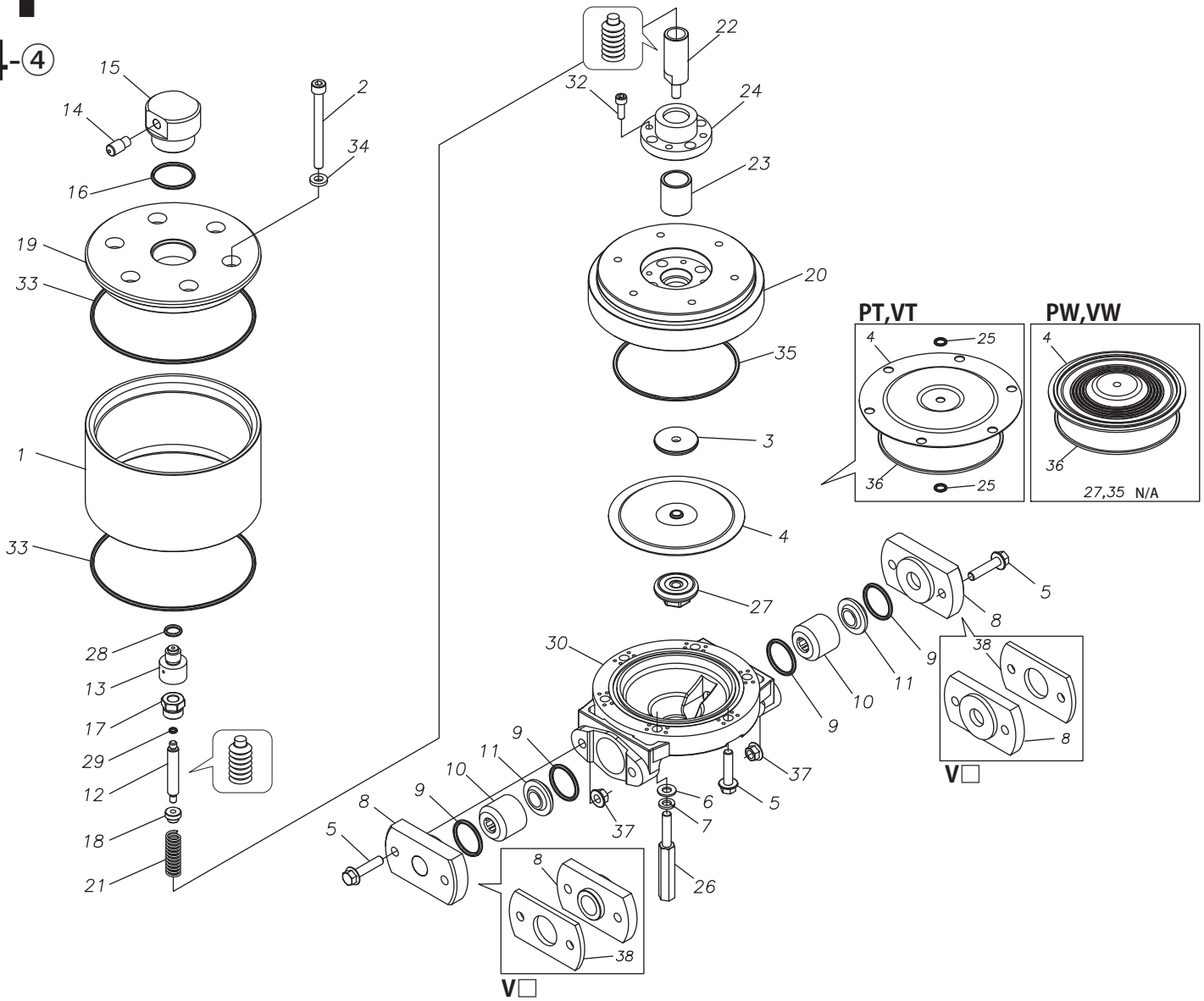


# 4 15A □ 15S □



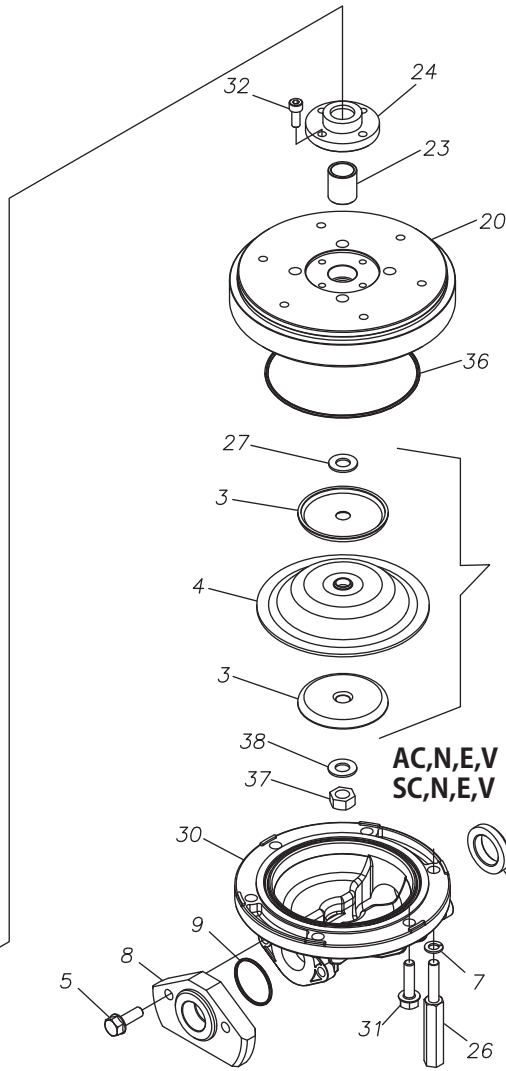
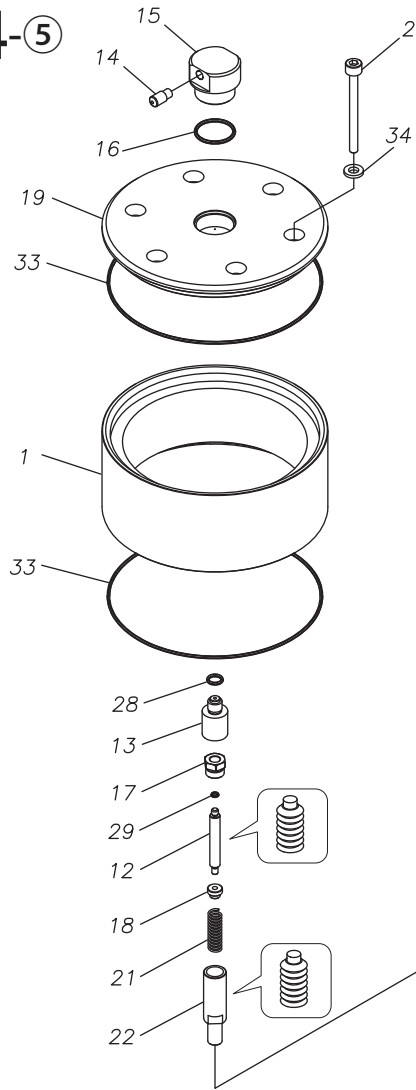
# 4 15P□ 15V□

4-4

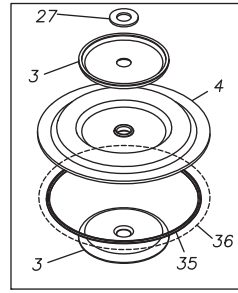


# 4 25A □ 25S □

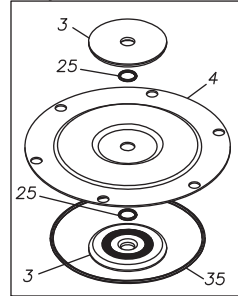
4-5



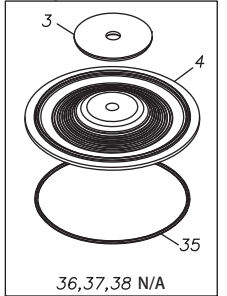
AH,AS,SH,SS



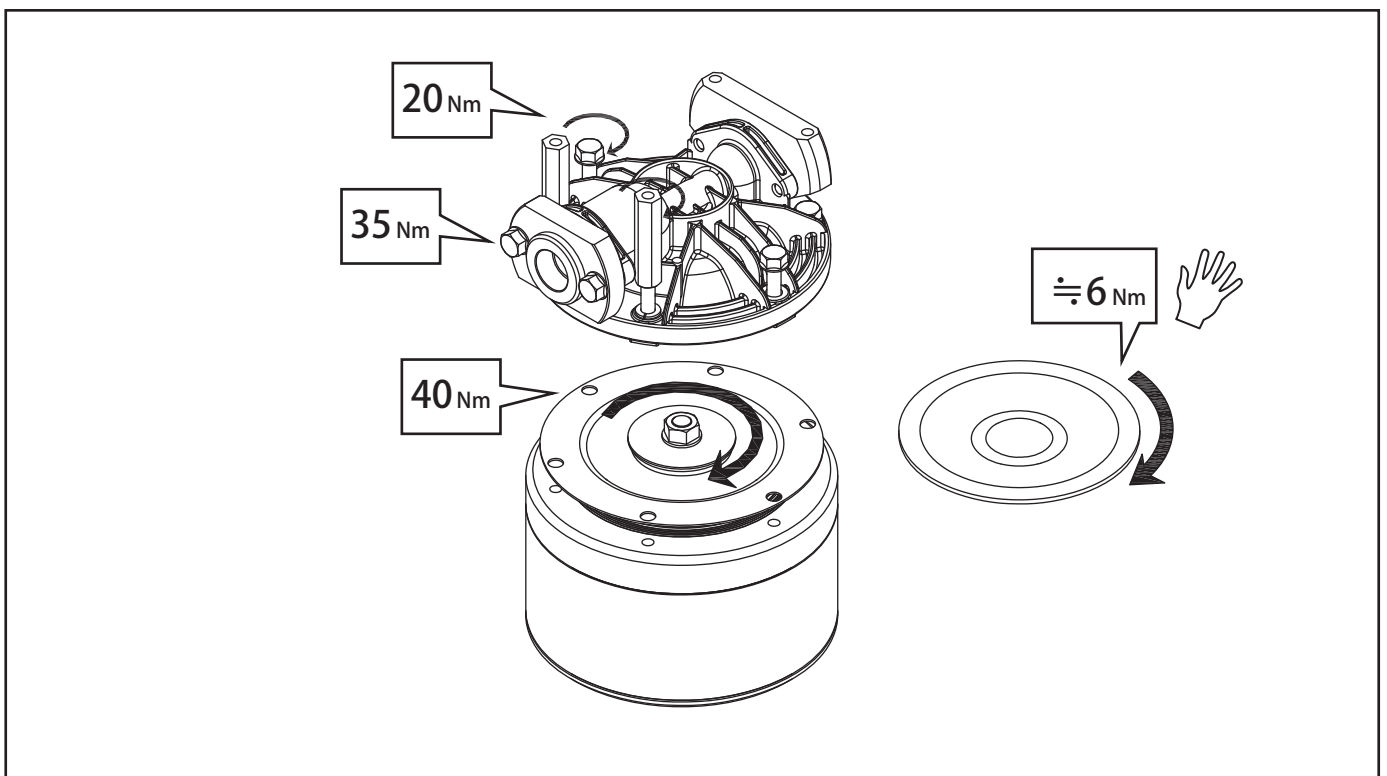
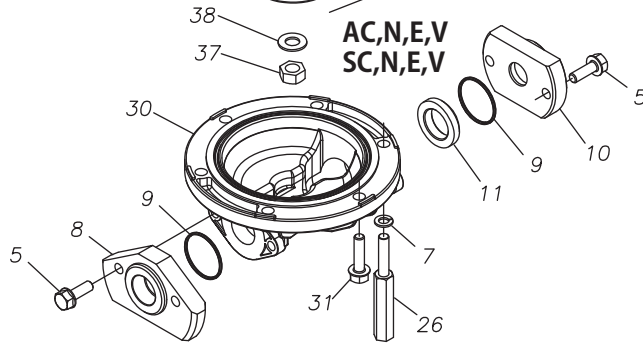
AT,ST



AW,SW

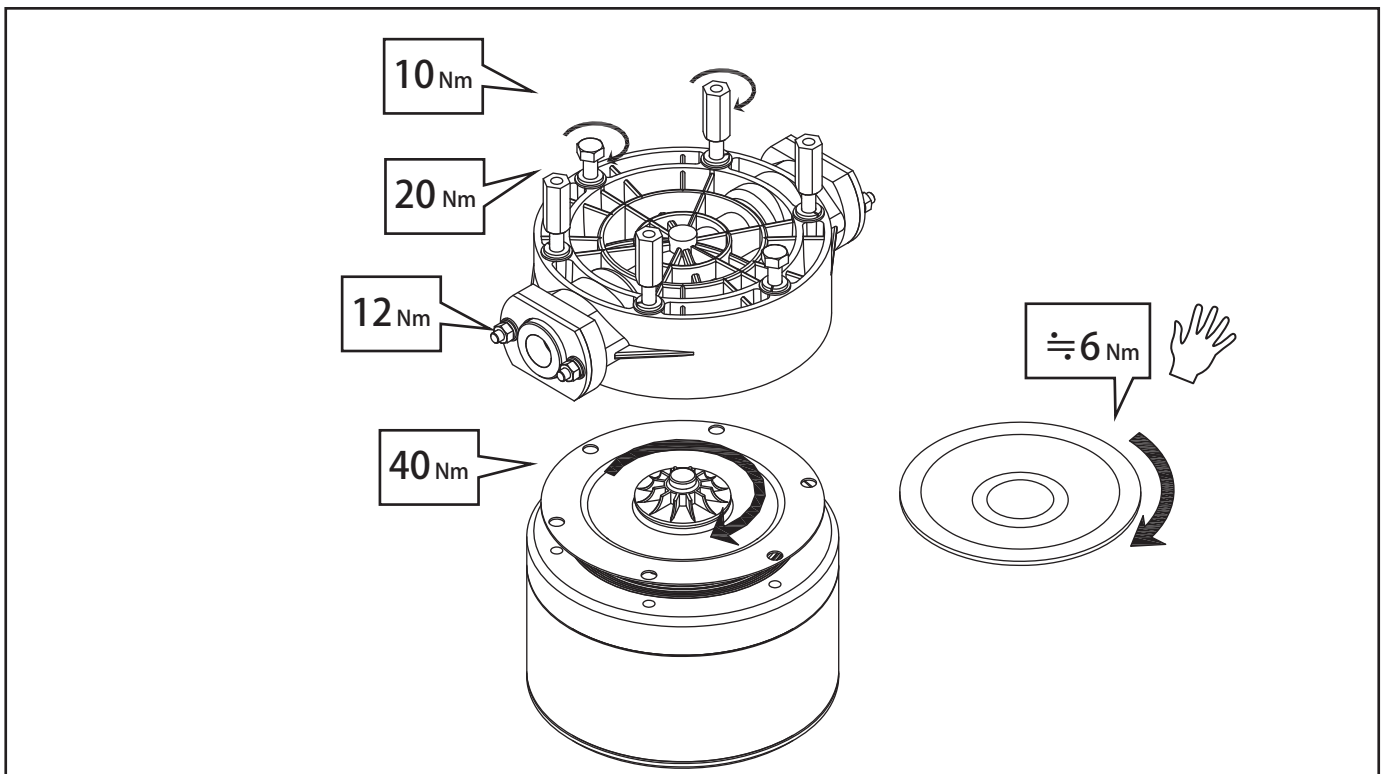
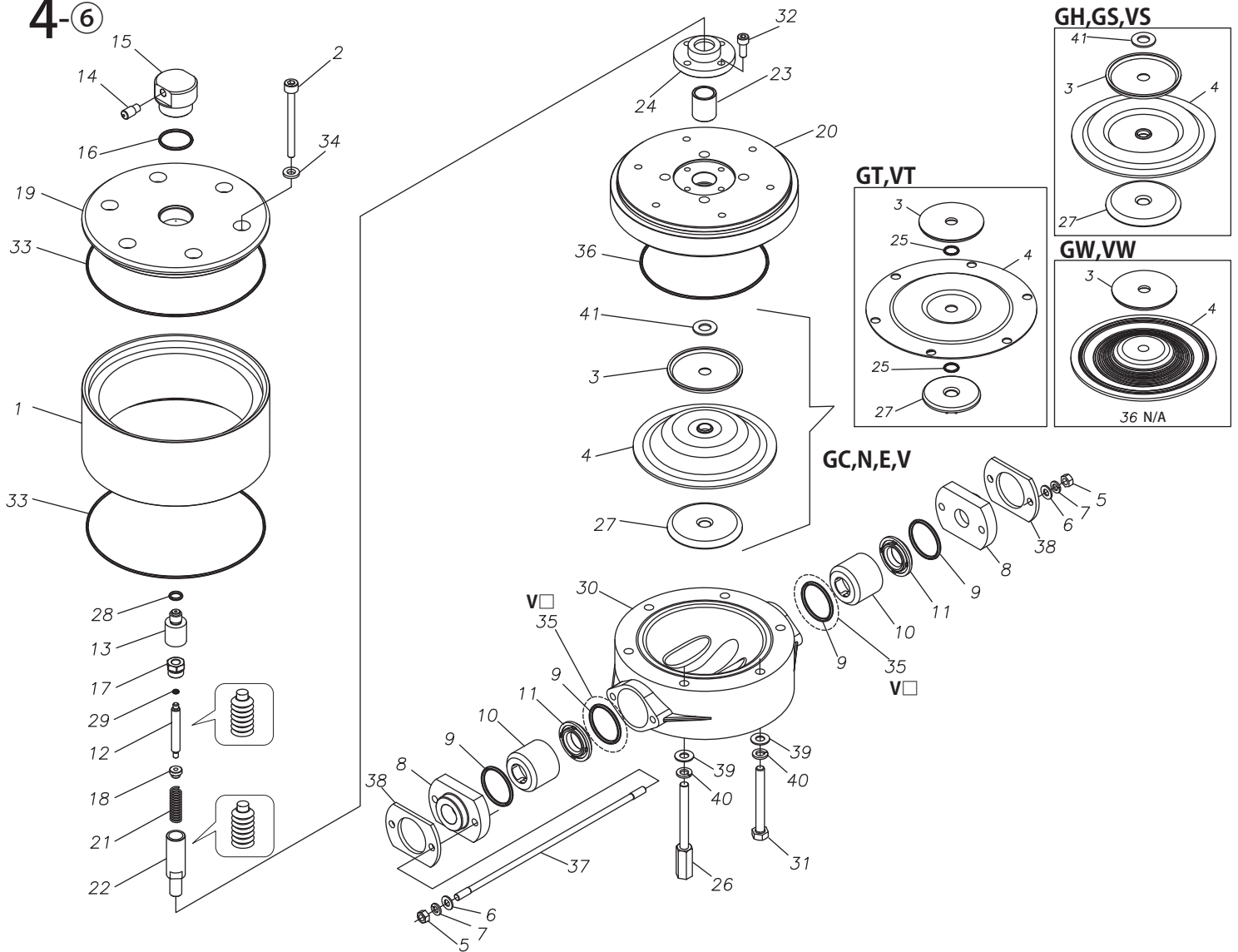


AC,N,E,V  
SC,N,E,V



# 4 25G□ 25V□

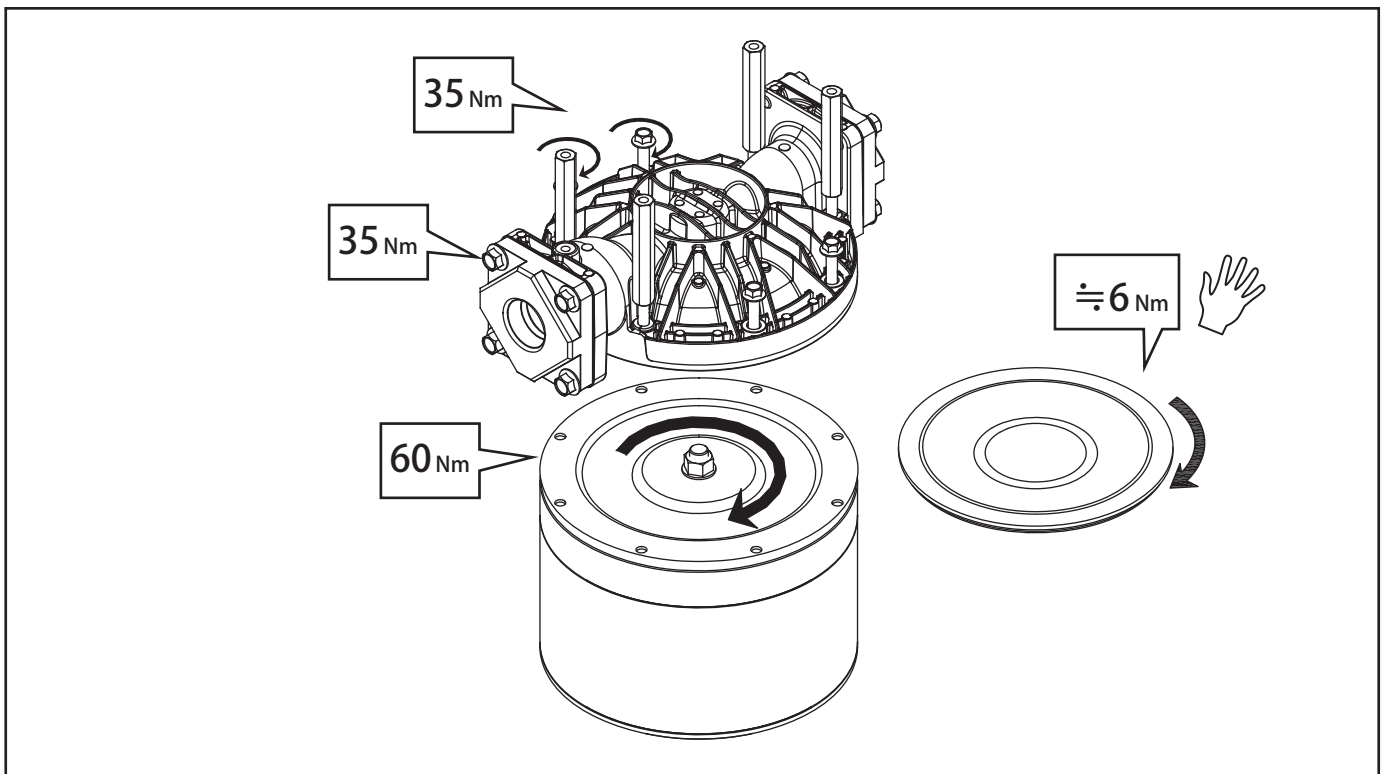
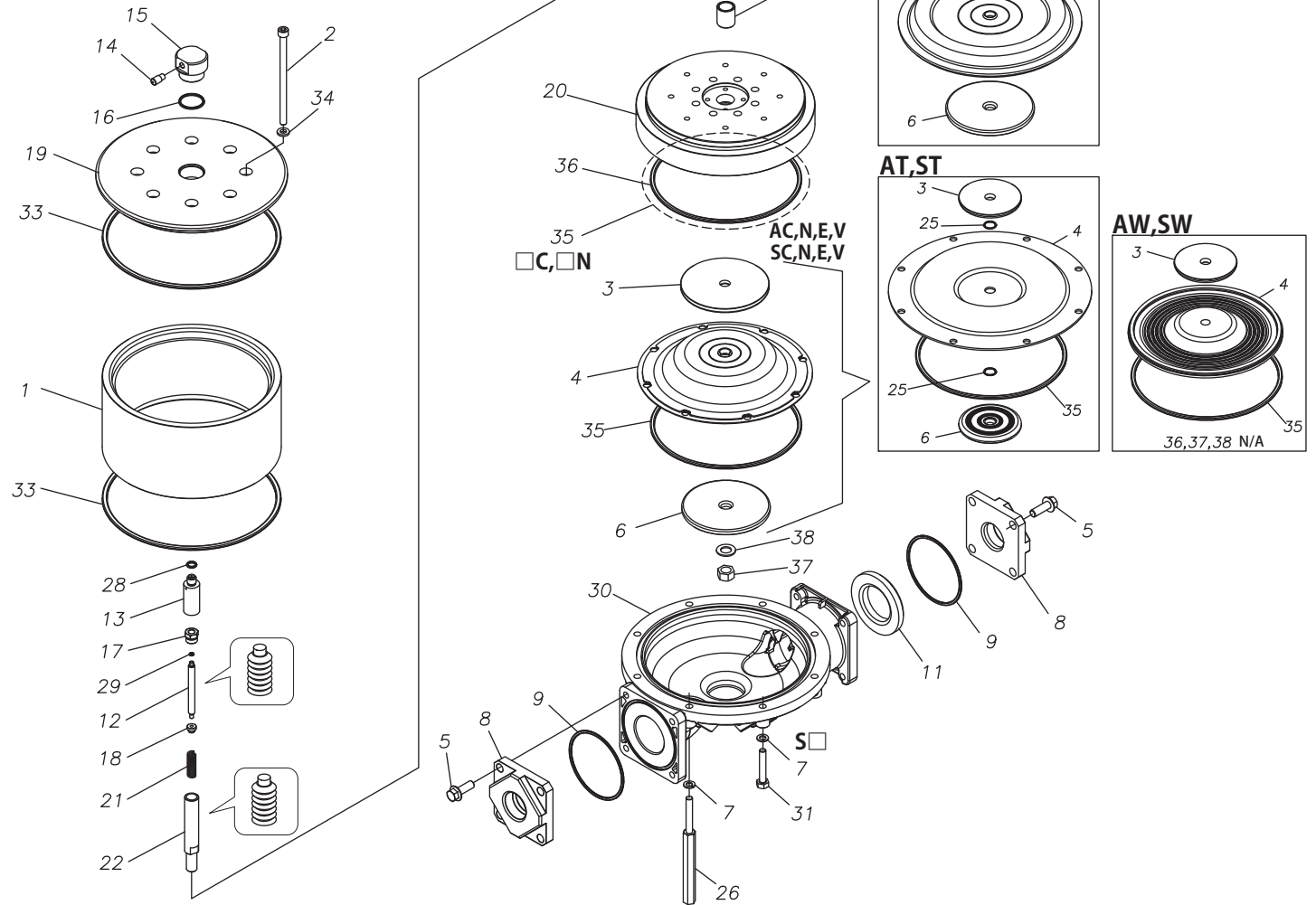
4-⑥



# 4

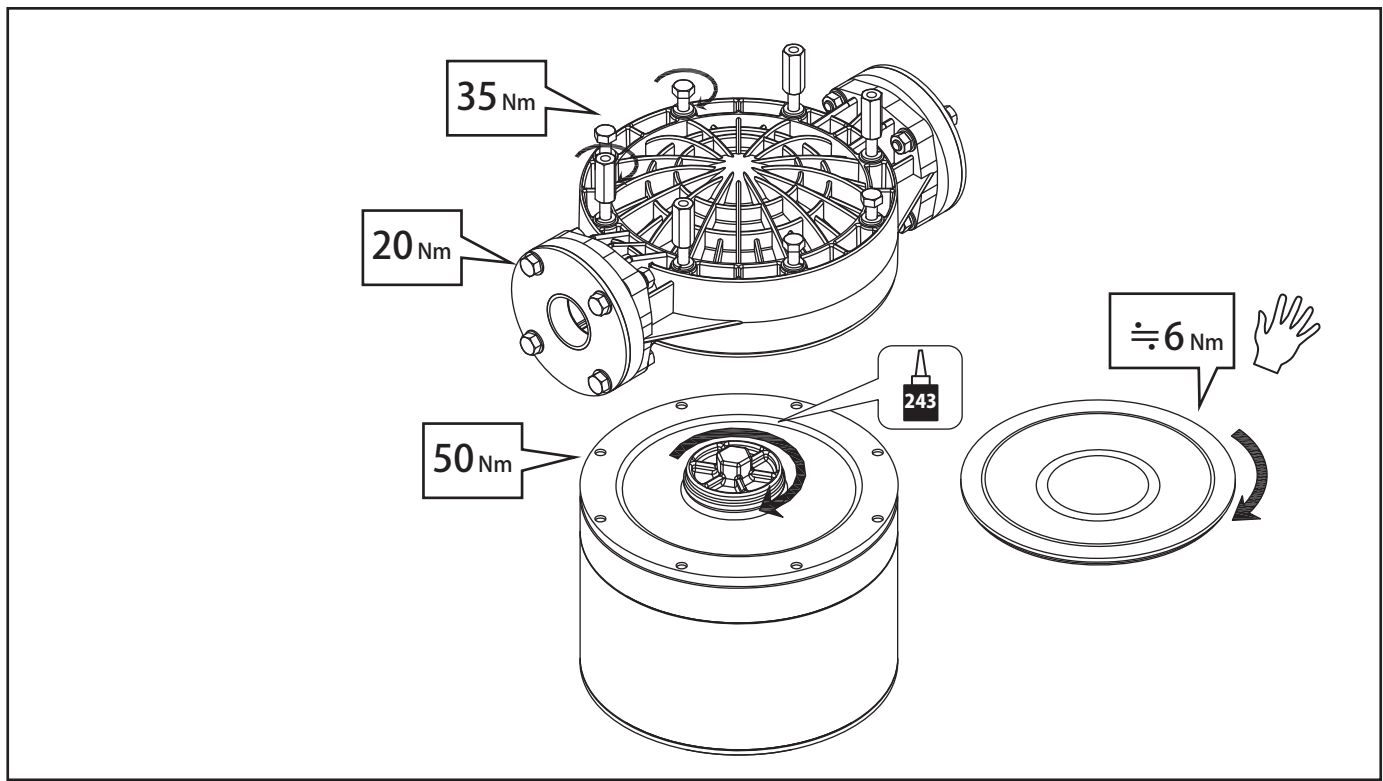
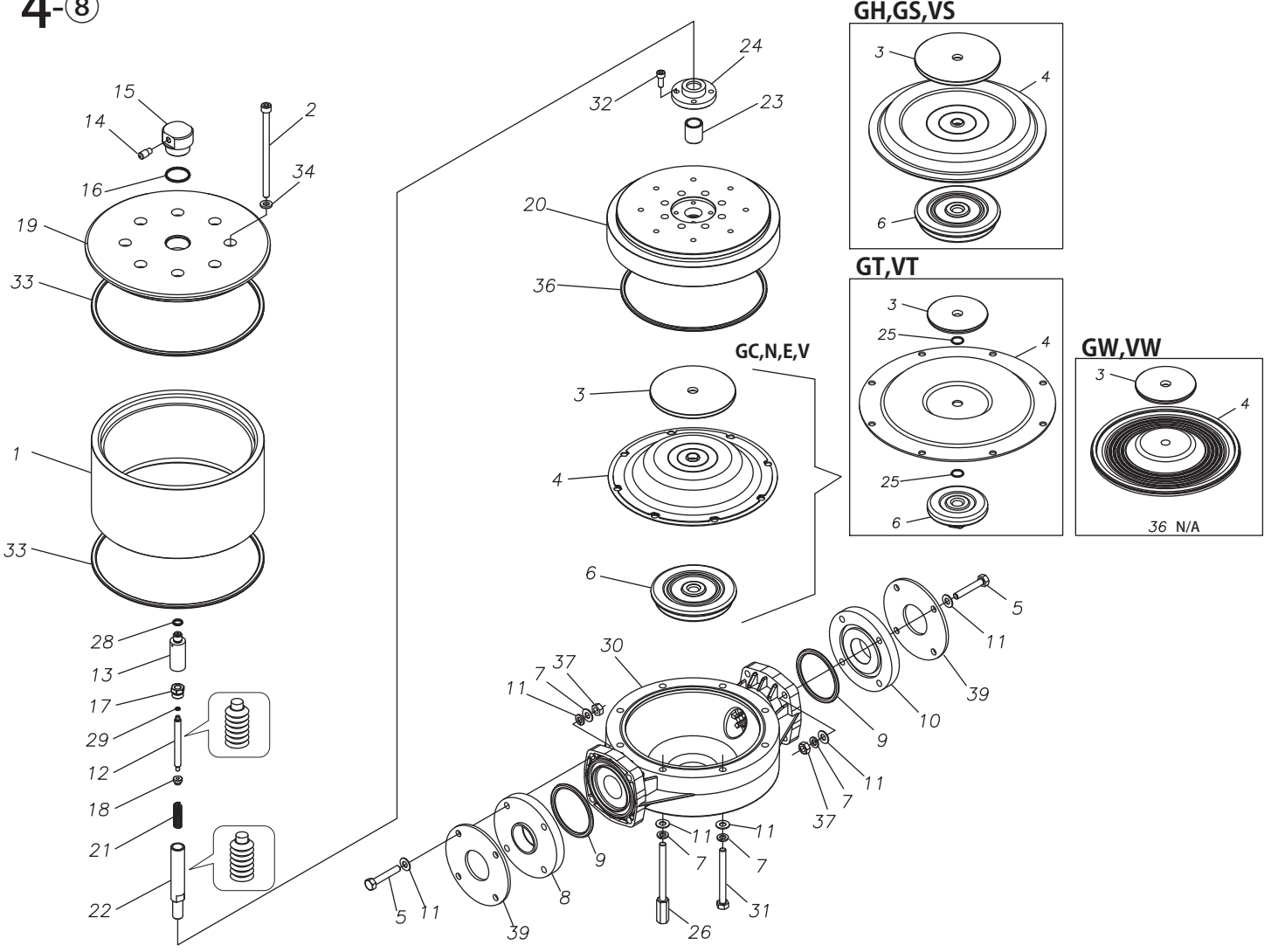
40A □ 40S □

## 4-7



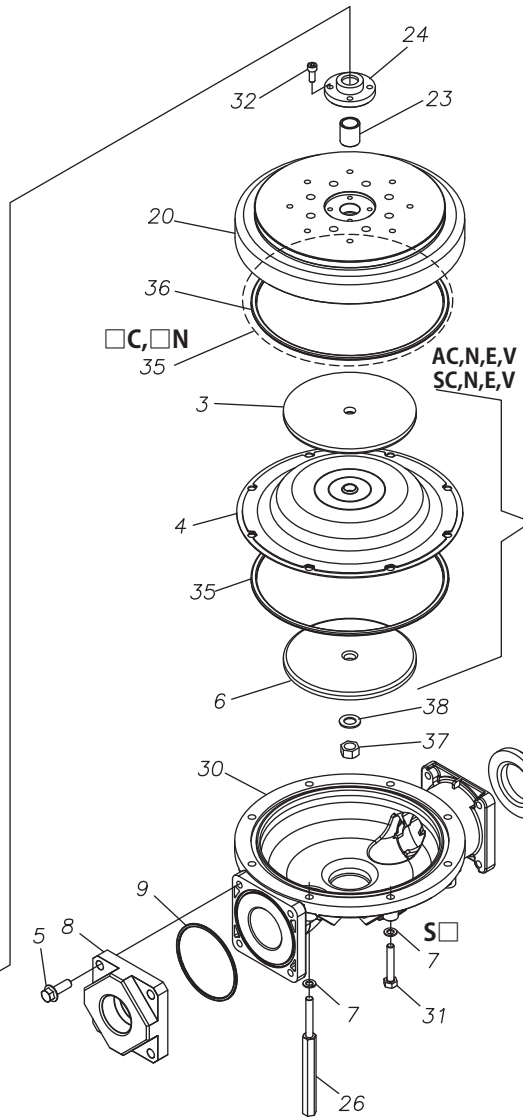
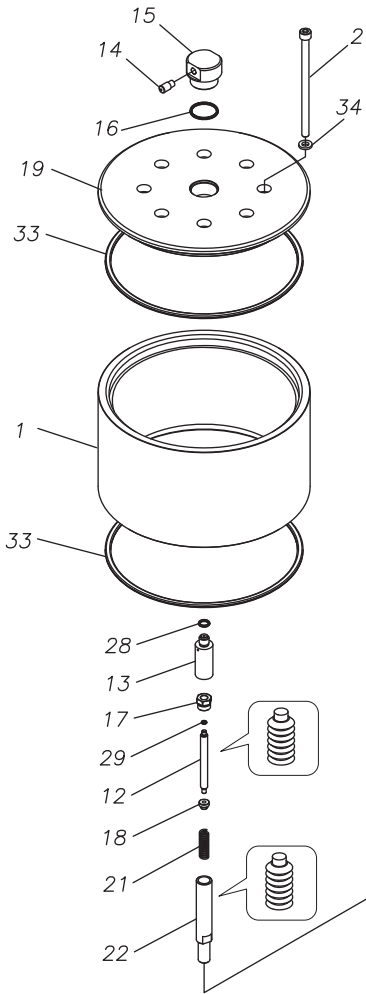
**4** 40G □ 40V □

4-8

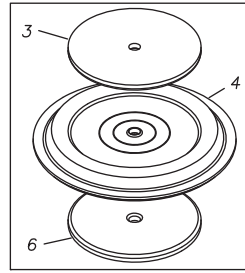


# 4 50A □ 50S □

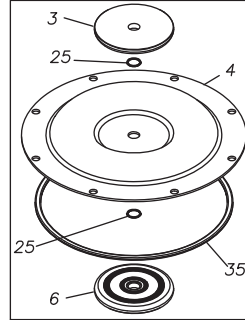
4-9



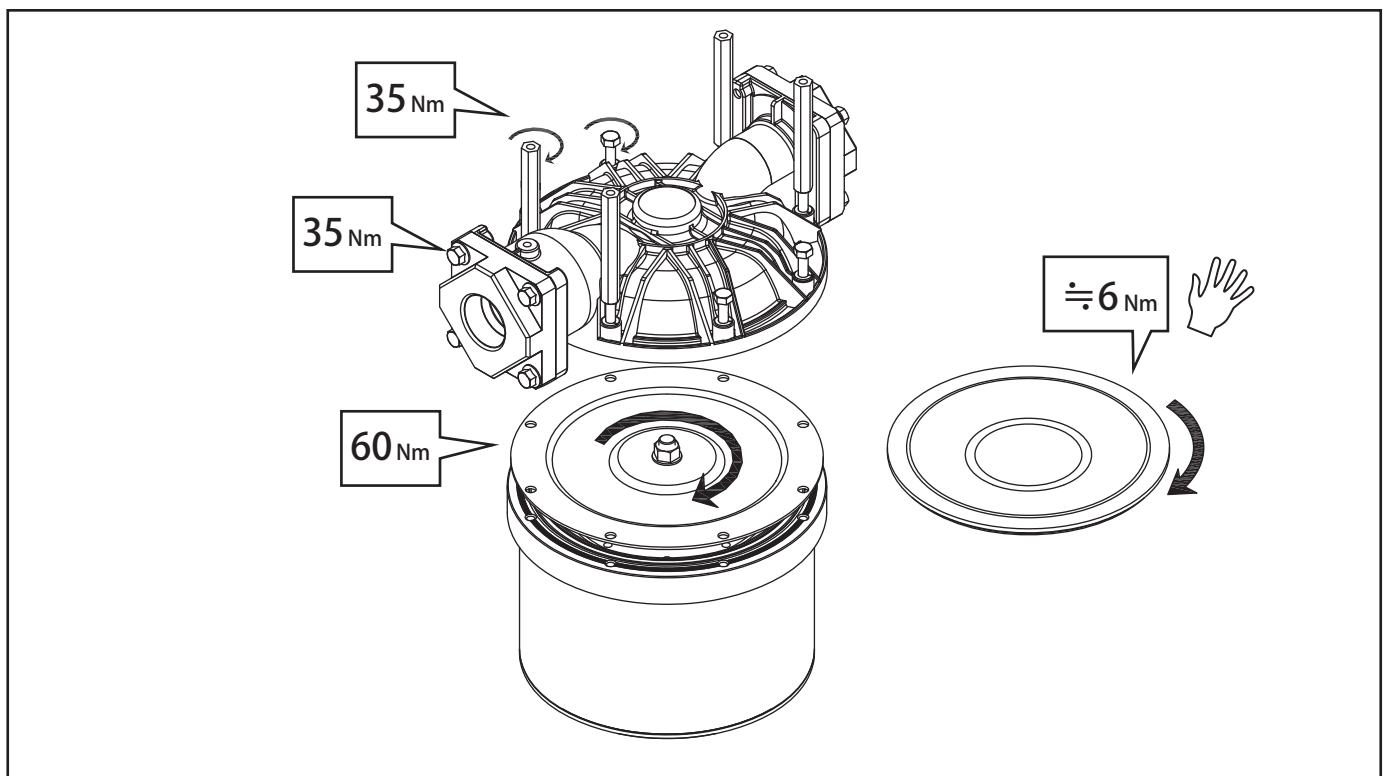
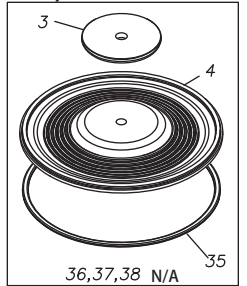
AH,AS,SH,SS



AT,ST



AW,SW



# 4 50G□ 50V□

4-10

